

BEFARD



**MINI CRANE
ON TRACKED CHASSIS**

XM800

BEFARD XM800

COMPACT MINI crane pick & carry

The Befard XM800 is a state-of-the-art mini Pick & Carry crane designed for maximum functionality and mobility in tough working environments.

Thanks to its compact dimensions, it fits easily into a standard doorway and the extensible tracks up to a width of 1100 mm provide stability and safety during crane operations.

This versatile model offers an impressive reach of 6.85 metres - making it possible to work at first floor height. The XM800 can travel with a suspended load of up to 800 kg, and with the use of support feet its maximum load capacity increases up to 990 kg.

The optional winch accessory further enhances application flexibility, making the XM800 ideal for assembly, service, industrial or construction work.

Befard XM800 is the perfect choice where precision, mobility and high efficiency in confined spaces are important.



25/06/2025

XM800

BEFARD.COM

UNRIVALLED POWER, COMPACT DIMENSIONS TO WORK MORE EFFICIENTLY

- maximum load capacity 990 kg - with support feet
- PICK&CARRY - driving with suspended load of 800 kg
- range 6.85 m (with optional equipment)
- hydraulic winch 500 kg
- 50° rotation of the column
- width 780 mm, height less than 1450 mm (can pass through any door)
- extendible tracked undercarriage 780 mm-1100 mm - improving stability while maintaining compactness
- radio control of both operation and travel
- wide range of applications on the construction site
- overload protection system
- drive selectable: combustion engine , combustion engine + electric motor (230 V, 400 V or 110 V) or Li-Ion batteries



25/06/2025

XM800

BEFARD.COM

UNRIVALLED ASPECTS

BEFARD



MACHINE RANGE

The maximum vertical reach in the standard version is 4.5 m, with optional equipment (manual jib, search hook) it is 5.85 m, with the use of support feet and (2 pcs. manual jib, search hook) the reach is 6.85 m.



LOAD CAPACITY

Load capacity of the standard machine 800 kg, with optional equipment 990 kg.



PICK AND CARRY

The Pick&Carry function allows the crane to move with a lifted load. It allows for quick and efficient transport of elements without the need to put them down, which significantly improves work on a construction site or in an industrial plant.



CHOICE OF POWER SUPPLY

The crane can be equipped with one of 3 power sources:

- combustion (petrol)
- combustion-electric (230 V / 400 V / 110 V)
- Li-ion batteries

25/06/2025

XM800

BEFARD.COM

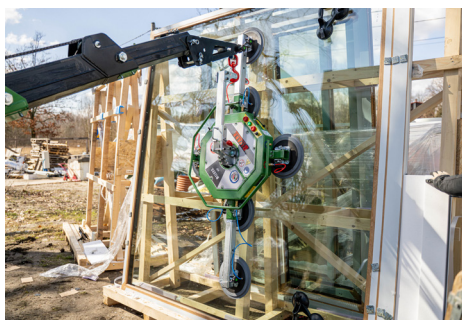
WHAT IS MOST IMPORTANT YOU HAVE AS STANDARD

BEFARD



FULLY REMOTE-CONTROLLED MACHINE

Radio control of both travel and crane operation makes work easier and safer.
Charger for radio control included as standard.



HYDRAULIC EXTENSION

2 hydraulic outriggers - provides smooth and quick adjustment of boom length via radio remote control.



EXTENDABLE, NON-MARKING TRACKS

The extendable undercarriage (780 - 1100 mm) makes the unit more stable.
The ability to narrow the track width allows passage through standard doors. Non-marking non-marking tracks as standard.



ARM OPENING ANGLE

The 57° boom angle affects the crane's working range, allowing for a larger radius of operation and better positioning for the installation or lifting location. This is particularly useful in confined spaces where precision and flexibility of movement are key.

25/06/2025

XM800

BEFARD.COM

WHAT IS MOST IMPORTANT YOU HAVE AS STANDARD

BEFARD



ROTATING COLUMN

Thanks to the crane's pivoting column, it is possible to rotate the boom to the left and right within a range of $\pm 25^\circ$, for a total of 50° of rotational movement. This feature significantly increases the operational flexibility of the unit, enabling precise positioning of the load in confined spaces.



TRANSPORT PLATFORM

A specially designed platform mounted on the crane enables the safe transport of loads weighing up to 800 kg. This solution significantly increases the functionality of the XM800 mini crane, allowing it to be used not only for lifting, but also for transporting materials within a construction site or production hall.



ANTI-OVERLOAD SYSTEM

For maximum operational safety, the XM800 mini crane is equipped with an anti-overload system that monitors the load in real time. The system automatically detects if the permissible lifting capacity is exceeded and, if necessary, blocks further lifting or movement, preventing damage to the machine and the risk of accidents.



TWO OPERATING AND DRIVING MODES

The XM800 mini crane is equipped with two operating and travel modes: fast and slow. It allows you to adjust the machine's parameters to current operational needs.

25/06/2025

XM800

BEFARD.COM

SELECT OPTIONAL

BEFARD



WINCH

Hydraulic winch:
- 500 kg with 36 m of 6 mm wire rope
significantly increasing the functionality of the unit.



POSSIBLE INSTALLATION OF SUPPORT FEET

Additional support feet at the front of the machine
increasing the stationary lifting capacity to 990 kg.
Feet extend manually, lowered hydraulically.



PLATFORM FOR STANDING ON THE MACHINE

Rear platform for operator to stand on the machine
(not required in standard use).



LOADING PLATFORM EXTENSION

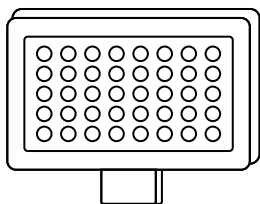
Removable extension to the loading platform by approx. 0.5 m.

25/06/2025

XM800

BEFARD.COM

ACCESSORIES ARE STANDARD



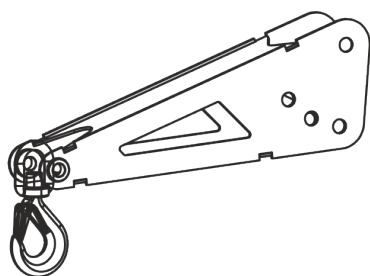
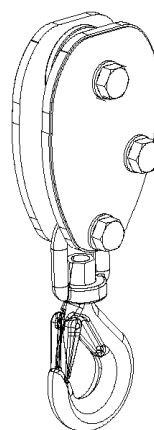
LED WORK LAMP

- magnet lamp

OPTIONAL

BLOCK

Winch accessory.

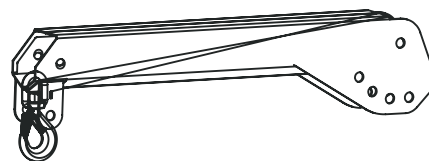


JIB SEARCH HOOK

Possibility to extend the range by approx. 50 cm

MANUAL JIB

Possibility of extending the reach by approx. 100 cm. Possibility of using 2 Jib hand arms simultaneously.



25/06/2025

BEFARD XM800

COMFORT AND ECOLOGY

BEFARD

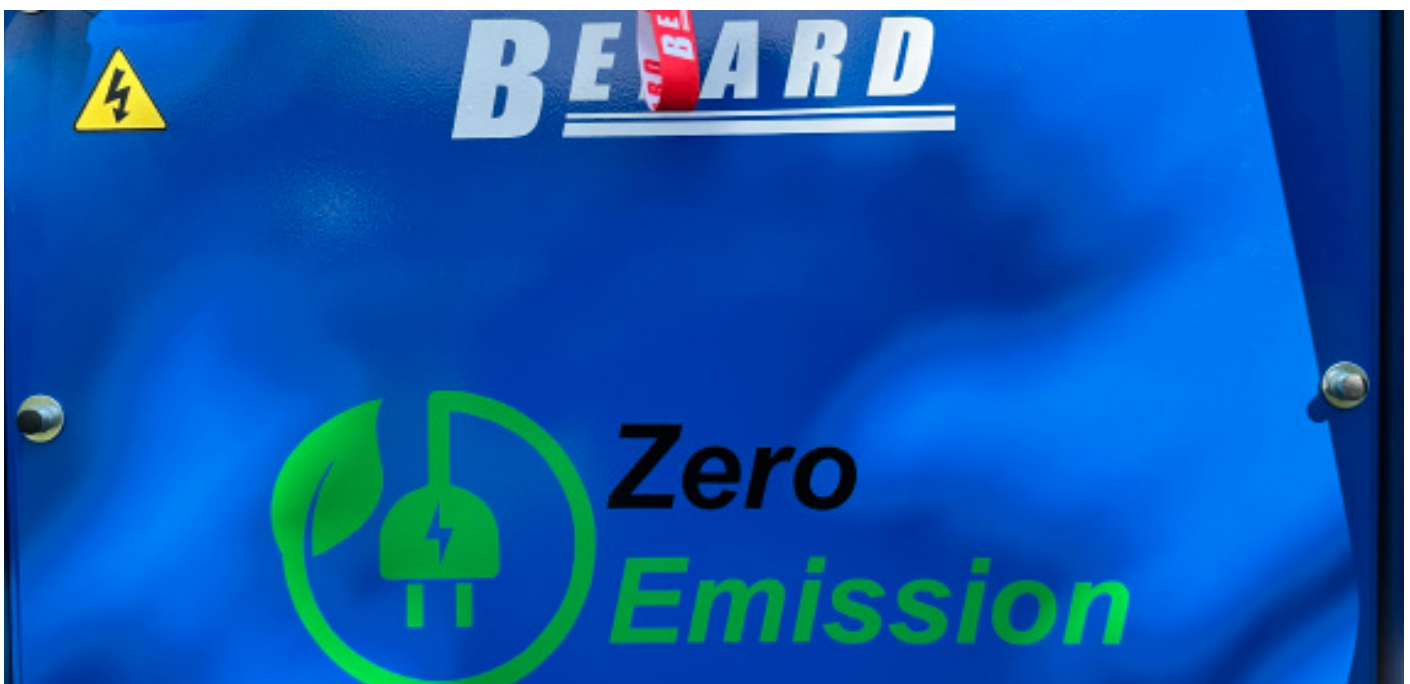
BEFARD electric machines are not only ecology, but also the highest comfort of work. Elimination of the combustion engine minimizes noise and vibration of the machine.

Such a solution allows for trouble-free use of machines in European city centers where Low Emission Zone regulations apply (e.g. London, Paris, or Berlin)

BUILT-IN 230V CHARGER AS STANDARD

POSSIBILITY TO WORK ON A CABLE WHILE CHARGING THE BATTERY

- fully battery powered (Li-ion)
- bio oil optionally available for the combustion version



25/06/2025

XM800

BEFARD.COM

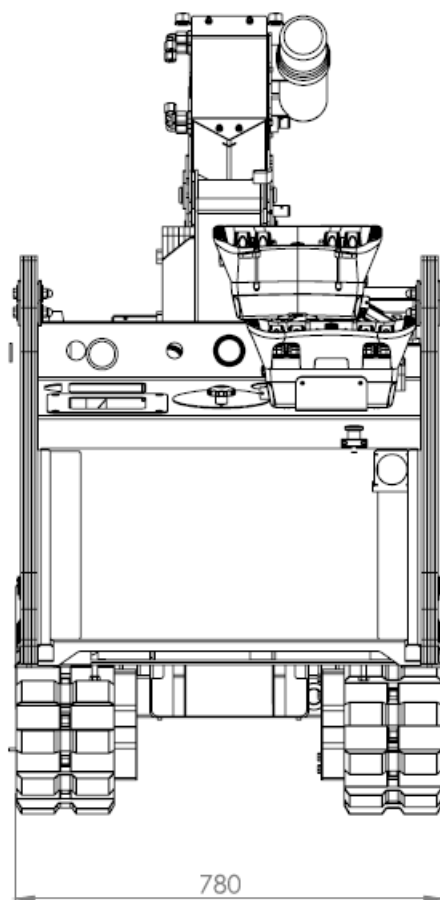
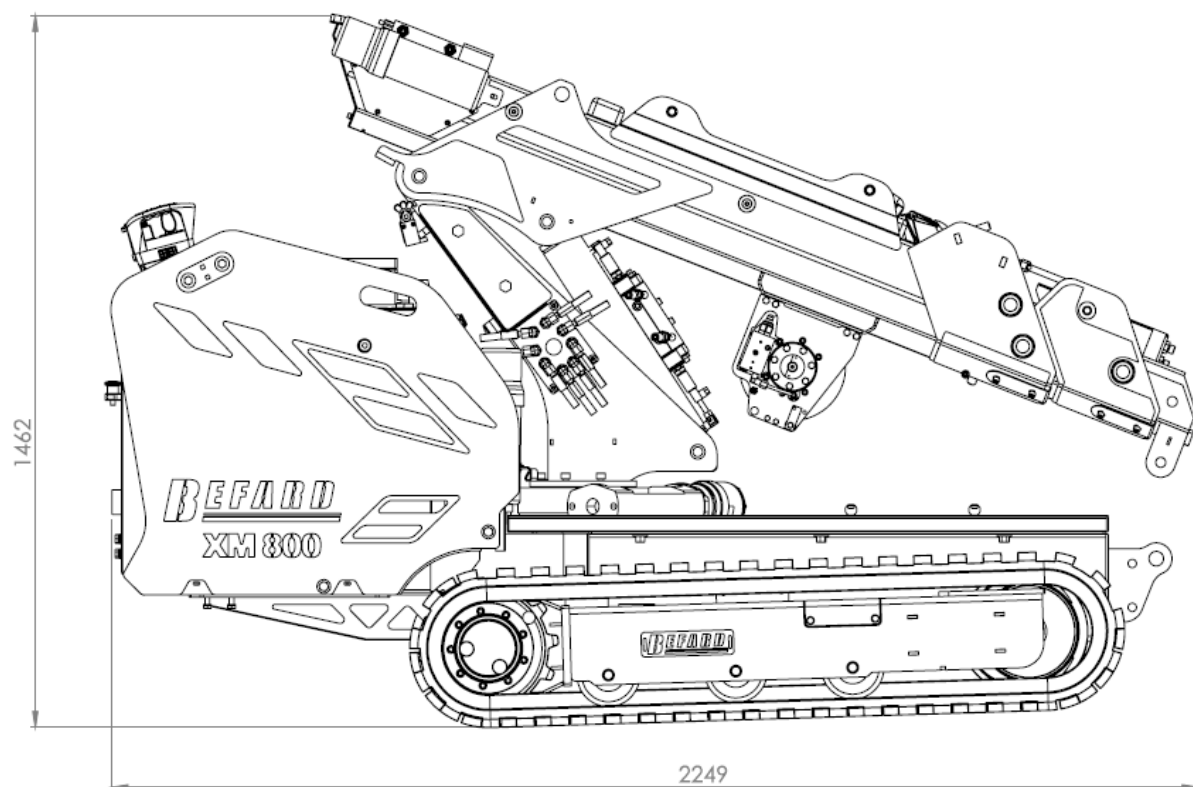
TECHNICAL PARAMETERS

Maximum load capacity pick&carry	800 kg
Maximum lifting capacity with supports feet (option)	990 kg
Length of the transport device	2,3 m
Height of the transport device	1,45 m
Width of the transport device	0,78 m
Maximum horizontal range	↔ 3,5 m
Maximum horizontal range with equipment	↔ 6,0 m
Maximum vertical range	↑↓ 4,5 m
Maximum vertical reach with optional equipment	↑↓ 6,85 m
Hydraulic winch lifting capacity	500 kg
Winch rope length	36 m
Radio control	work and ride
BASIC machine weight	900 kg
Machine weight WITH LOADS	1050 kg
Power supply	combustion, combustion-electric (230V, 400V or 110V) or Li-ion batteries
Column rotation	Rotation right and left 25° each (total 50°)

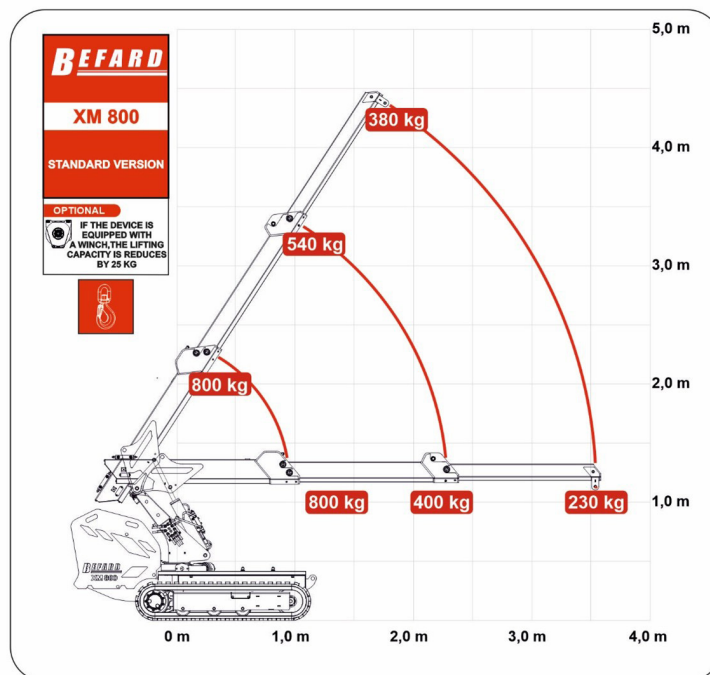
25/06/2025

XM800

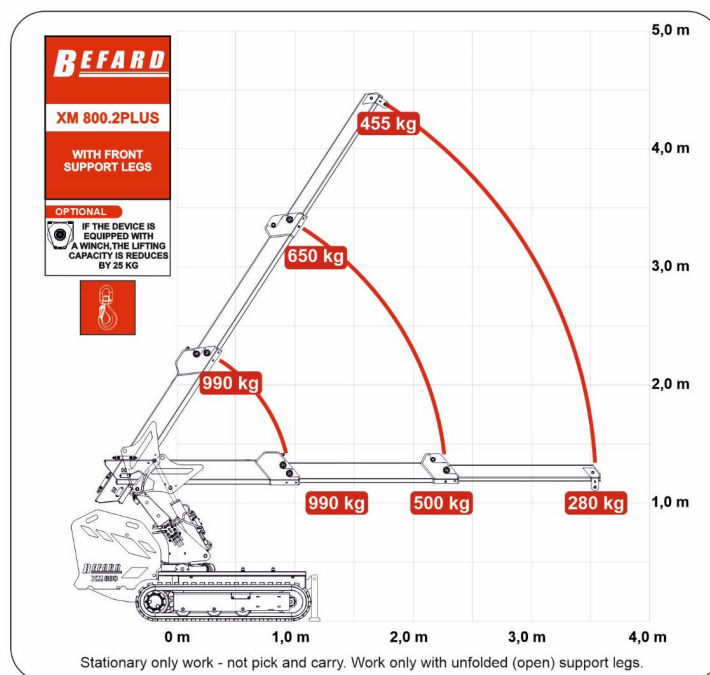
BEFARD.COM

DIMENSIONS FOR TRANSPORT

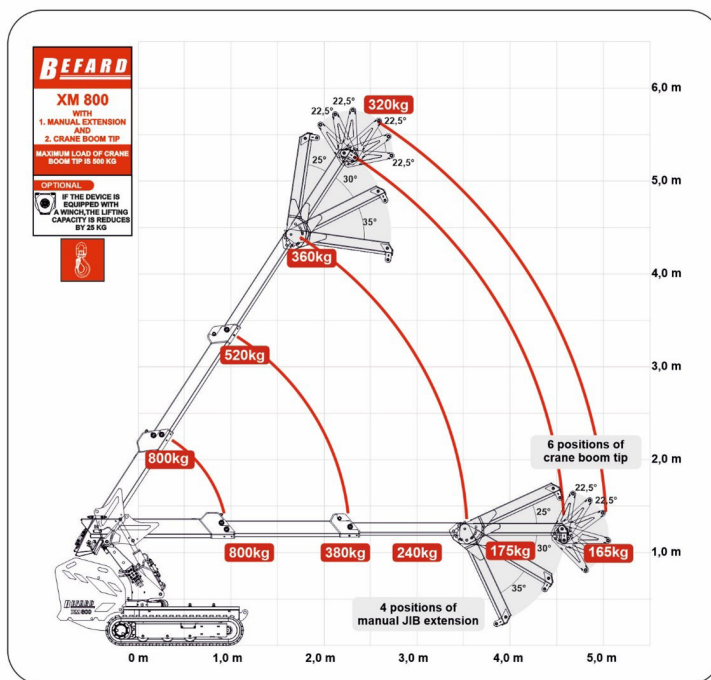
25/06/2025



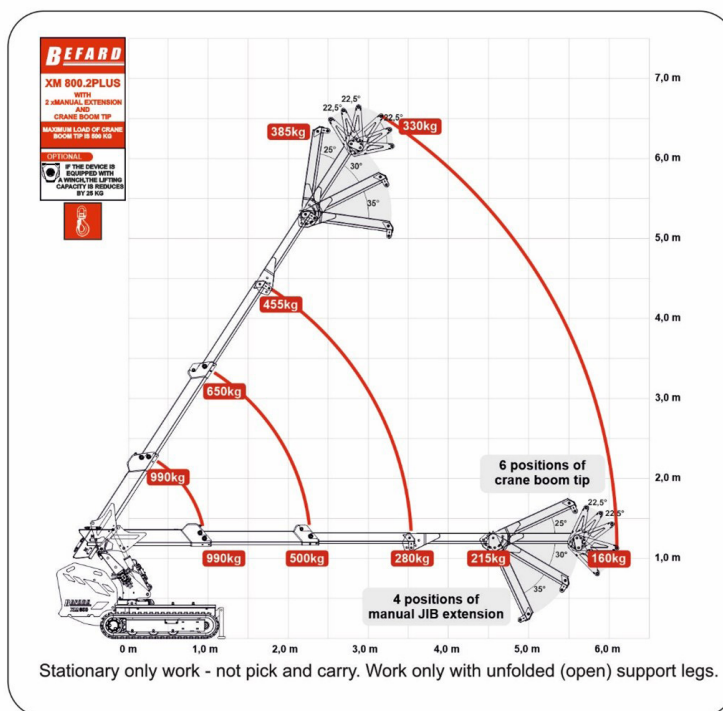
XM800 VERSION WITH SUPPORT FEET



25/06/2025



XM800 ACCESSORIES + SUPPORT FEET



25/06/2025

BEFARD XM800

BEFARD



25/06/2025

XM800

BEFARD.COM

BEFARD