

XM 800 - GASOLINE ENGINE
XM 800e - ELECTRIC
MINI CRANE ON TRACKED CHASSIS



BEFARD XM 800 / XM 800e - PICK and CARRY mini crane on a tracked chassis. Crane with column rotation function, fully radio controlled (driving and device functions). Equipped as a standard with non-marking tracks and extendable tracked chassis, which allows you to work both indoors and outdoors.

BEFARD XM 800 enables the safety transport of the loads on the construction site while maintaining stability.

BEFARD XM 800 - gasoline engine

BEFARD XM 800e - electric

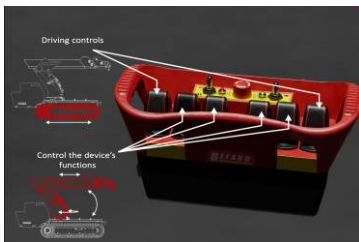
- maximum load capacity 800 kg
- reach of 6.17 m with optional equipment
- powered by a gasoline engine or Li-ion batteries
- weight ~1000 kg - transport by cars up to 3.5 t



STANDARD EQUIPMENT

- two hydraulic extensions (XM 800.2 / XM 800.2e)
- non-marking tracks
- extendable chassis tracks 78-110 cm
- radio control (both work and drive)
- rotating column 50°
- two operating modes (fast and slow)
- anti-overload system

RADIO CONTROL
AS STANDARD

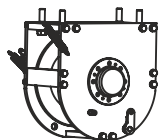


*chassis 2022/2023 3-roller version, later 4-roller versions

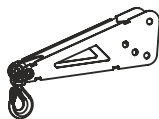
OPTIONAL EQUIPMENT

- hydraulic winch max. 500kg*
- crane boom tip (extends the range by approx. 50 cm)
- manual JIB extension (extends the reach by approx. 100 cm)
- possibility of double power supply (gasoline engine + power supply 230V / 110V)
- LED work lamp (powered directly from the machine)
- removable extension to the loading platform by 50 cm
- platform for standing on the machine as an increase in counterweight

Winch



Crane boom tip



Manual JIB extension



All configuration of XM 800 are equipped with one piece of hook that can be reattached to additional equipment if necessary

DEVICE'S FEATURES

- wide opening angle of the arm (65°) for easier placement of the load on the platform
- the dimensions of the device allow entry into doors (width 80 cm)
- easy disassembly of counterweight (to easier transport)**
- dedicated system for attaching the crane boom tip on the arm (in the transport position)
- the possibility of transporting the load on the device platform (permissible load weight depending on terrain)



* when using a winch, the lifting capacity of the device is reduced by 25 kg; winch operation characteristics depending on the length of the unrolled rope
 ** the shape and parameters of the counterweight depends on the version of the device

BEFARD XM 800e electric - comfort and eco

- fully battery powered (Li-ion batteries)
- bio oil - optionally available for both combustion and electric versions
- optional 400V charger (faster Li-ion battery charging)
- in the combustion version, the device can be equipped with an electric motor (on-grid power 230V)



Standard: during charging on-grid it's possible to work with the device (on wire)

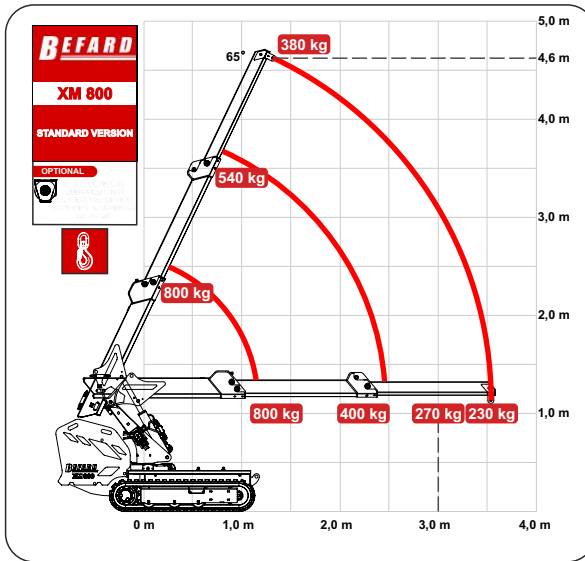
Standard: built-in Li-ion 230V battery charger

Electric BEFARD machines mean not only the eco, but also the highest comfort of work. Eliminating the combustion engine minimizes machine noise and vibration.

Electric cranes BEFARD provides a unique user experience and precision of work. It also gives you the option of free use of the machine in European city centers where regulations apply Low Emission Zone (e.g. London, Paris, Berlin).

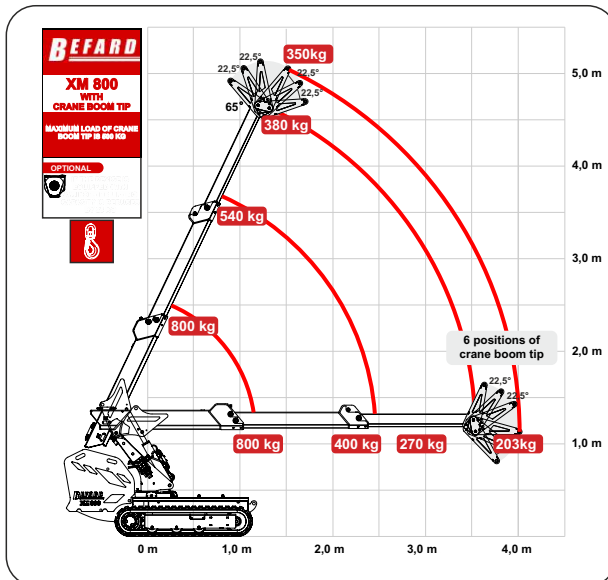


XM 800.2 / XM 800.2e standard version



Vertical range - over 4.6 m

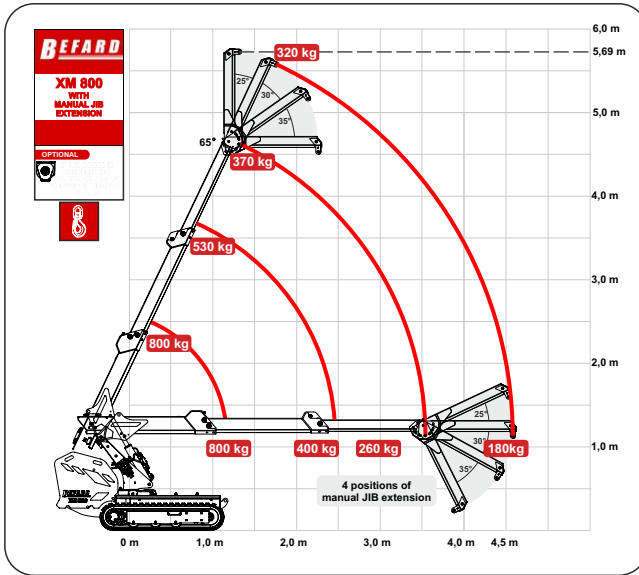
XM 800.2 / XM 800.2e version with crane boom tip



Vertical range - over 5 m

6 positions of crane boom tip enables precise assembly of elements

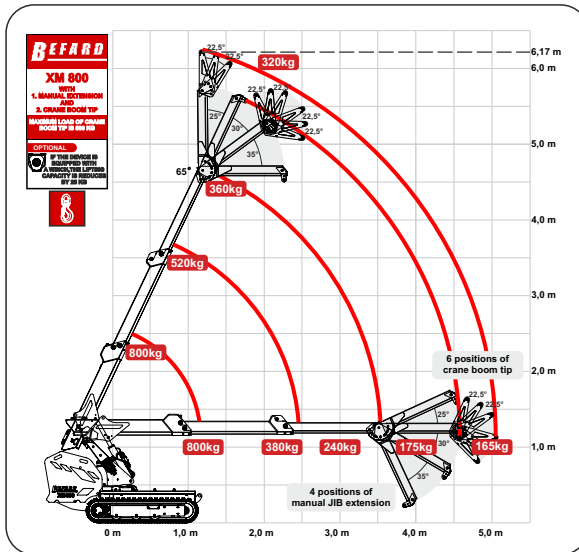
XM 800.2 / XM 800.2e version with manual JIB extension



Vertical range - over 5.6 m

Using manual JIB facilitate placement the load in the hard-to-reach places

XM 800.2 / XM 800.2e version with manual JIB extension and crane boom tip

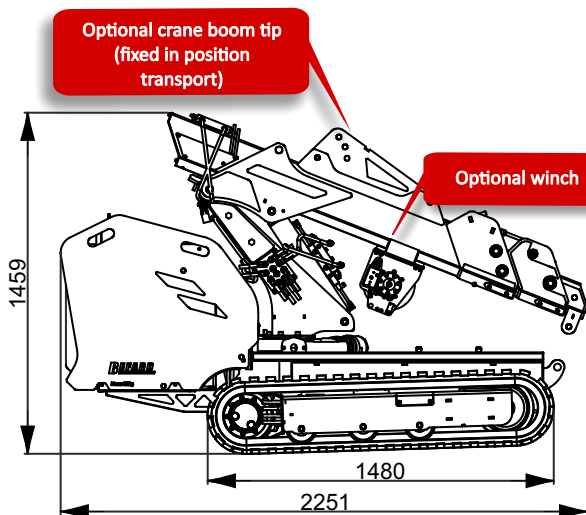
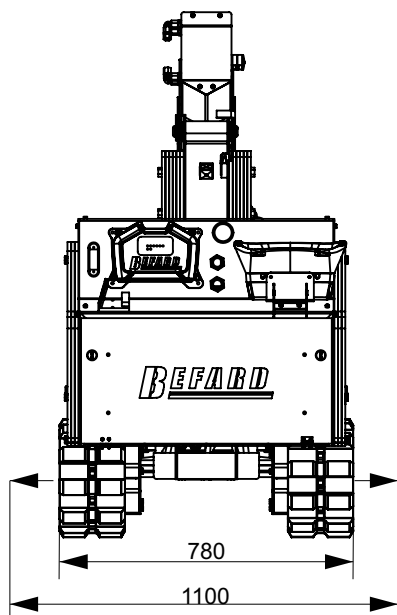


Vertical range - over 6.17 m

Using the manual JIB and crane jib extension increases the reach of the device and the number of mounting positions

Dimension of folded/unfolded tracks

Transport dimension



Rotating column

