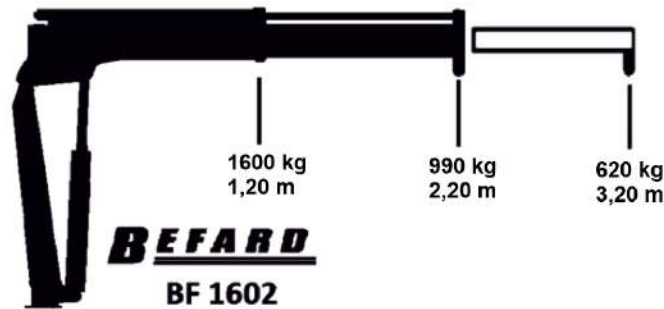




BEFARD series BF 1602

BF 1602

The diagram shows the general technical parameters of the BF 1602 crane capacity, intended both for the markets of EU countries and non-European markets.

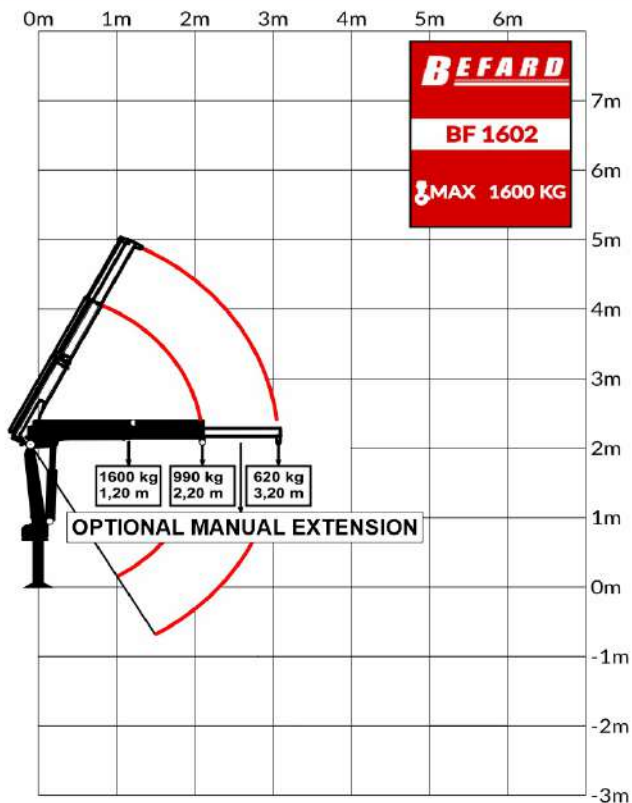


• Hydraulic extension: 1

• Manual extension: 1

TECHNICAL PARAMETERS

Lifting moment	20 kNm	
Maximum lifting capacity	1600 kg	
Hydraulic extension	2200 mm	
Maximum reach with manual extensions	3200 mm	
Crane height	1500 mm	
Transport width	1600 mm	
Spacing of supports	1000 mm	
Rotation angle	210-360°	
The moment of rotation (16 MPa)	3,5 kNm	
Stroke angle	63°	
Downward tilt angle	60°	
Working pressure	185 bar	
Recommended pump	Working pressure	280 bar
	Flow	13 l/min
Weight (does not include support feet)	195 kg	



The recommended pump flow, given in the card, may change depending on the power supply and the specification of the device that will be mounted to the crane. In standard applications, this is the maximum value.

SPECIFICATION

- The CE version meets the essential requirements of the Machinery Directive 2006/42 / CE and directive 2014/30 / EU
- Safety STOP switch
- Double-action locks protecting the extension cylinders
- Reinforced hydraulic hoses
- Support lowered hydraulically (up-down)
- Spring protection preventing uncontrolled sliding of supporting beams
- Hook 2t
- Radio control
- The possibility of adaptive development

BF 1602

BEFARD



Low weight



The maximum design capacity is 1600 kg



Reinforced hydraulic hoses



www.befard.com

Find us:   