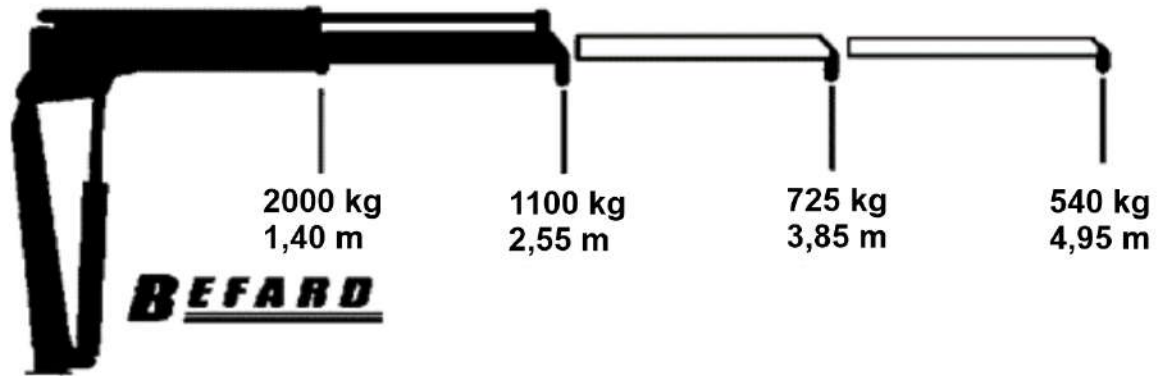




***BEFARD series BF 2602***

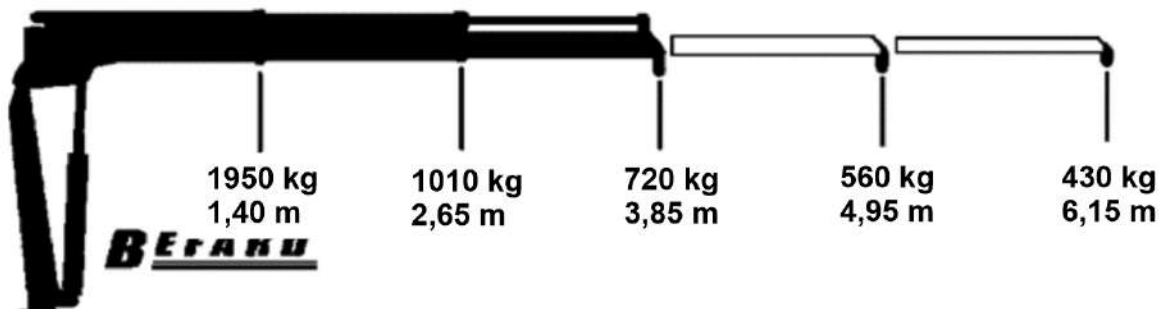
# BF 2602

The diagram shows the general technical parameters of the lifting capacity of the various versions of the cranes BF 2602 intended for both EU and non-European markets. For CE version (for European markets), the crane is delivered with diagrams lifting capacity not exceeding 990 kg.



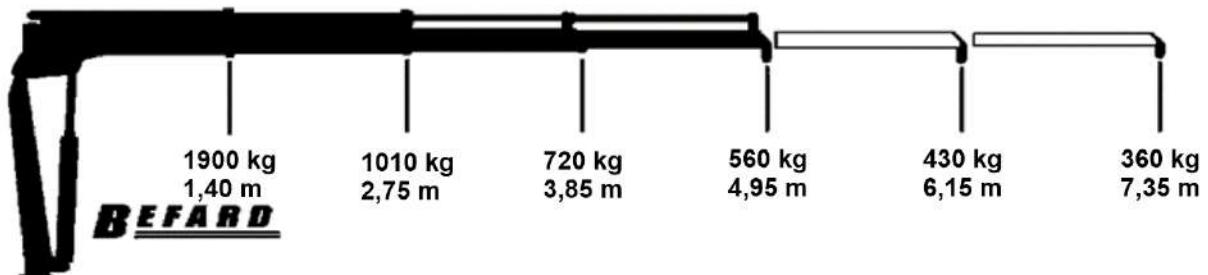
• Hydraulic extension: 1

• Manual extension: 2



• Hydraulic extension: 2

• Manual extension: 2



• Hydraulic extension: 3

• Manual extension: 2

**TECHNICAL PARAMETERS****BF 2602**

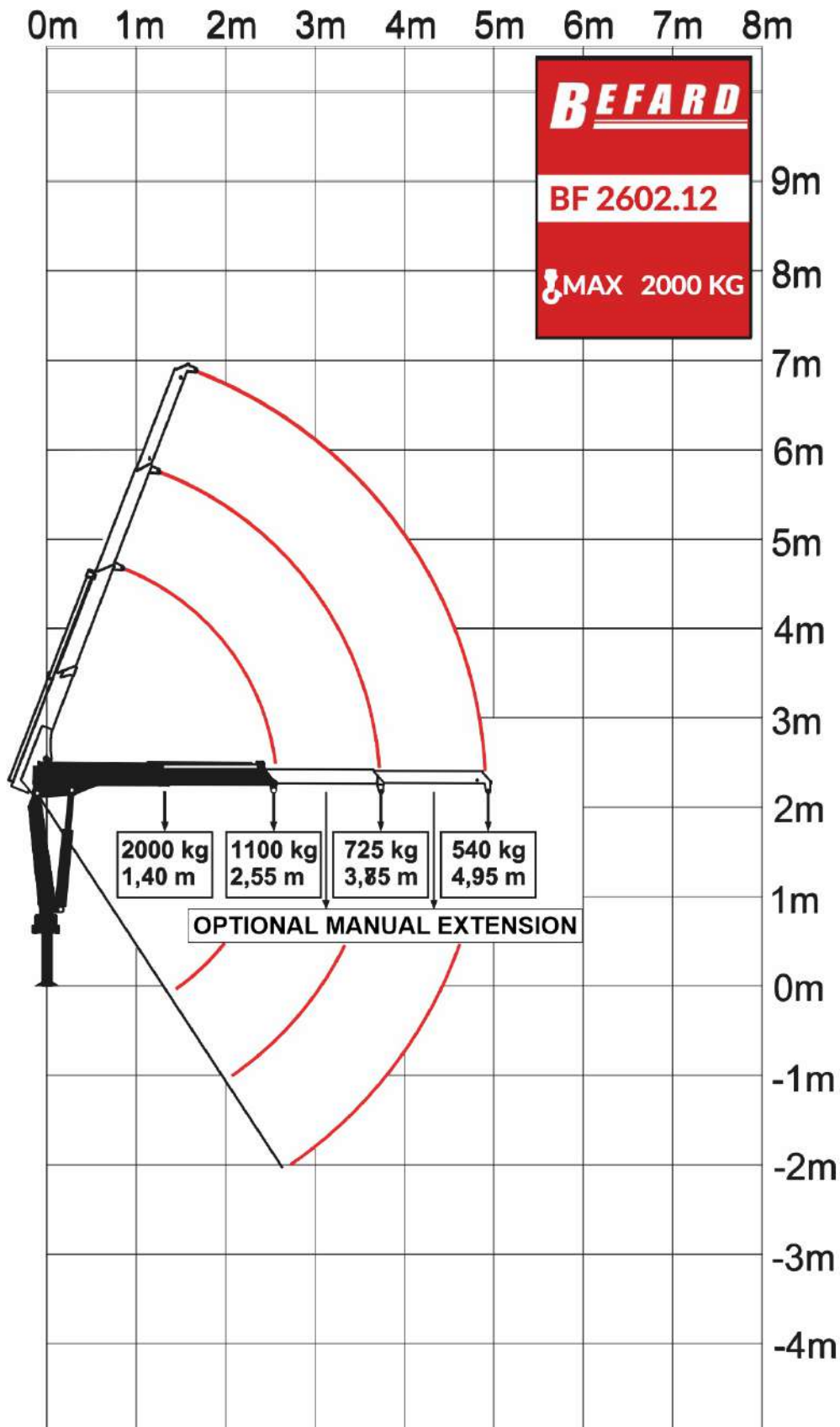
Lifting moment	20 kNm	
Maximum lifting capacity CE	990 kg	
Maximum lifting capacity	2000 kg	
Hydraulic extension	2550 mm	
Maximum reach with manual extensions	4950 mm	
Crane height	1800 mm	
Transport width	2050 mm	
Spacing of supports	2950 mm	
Rotation angle	180-360°	
The moment of rotation (16 MPa)	3,5 kNm	
Stroke angle	70°	
Downward tilt angle	60°	
Working pressure	185 bar	
Recommended pump	Working pressure	280 bar
	Flow	13 l/min
Weight (does not include support feet)	280 kg	

Recommended pump flow, given in the card, may change depending on the power supply and the specification of the device that will be mounted to the crane. In standard applications, this is the maximum value.





## BEFARD BF 2602.12



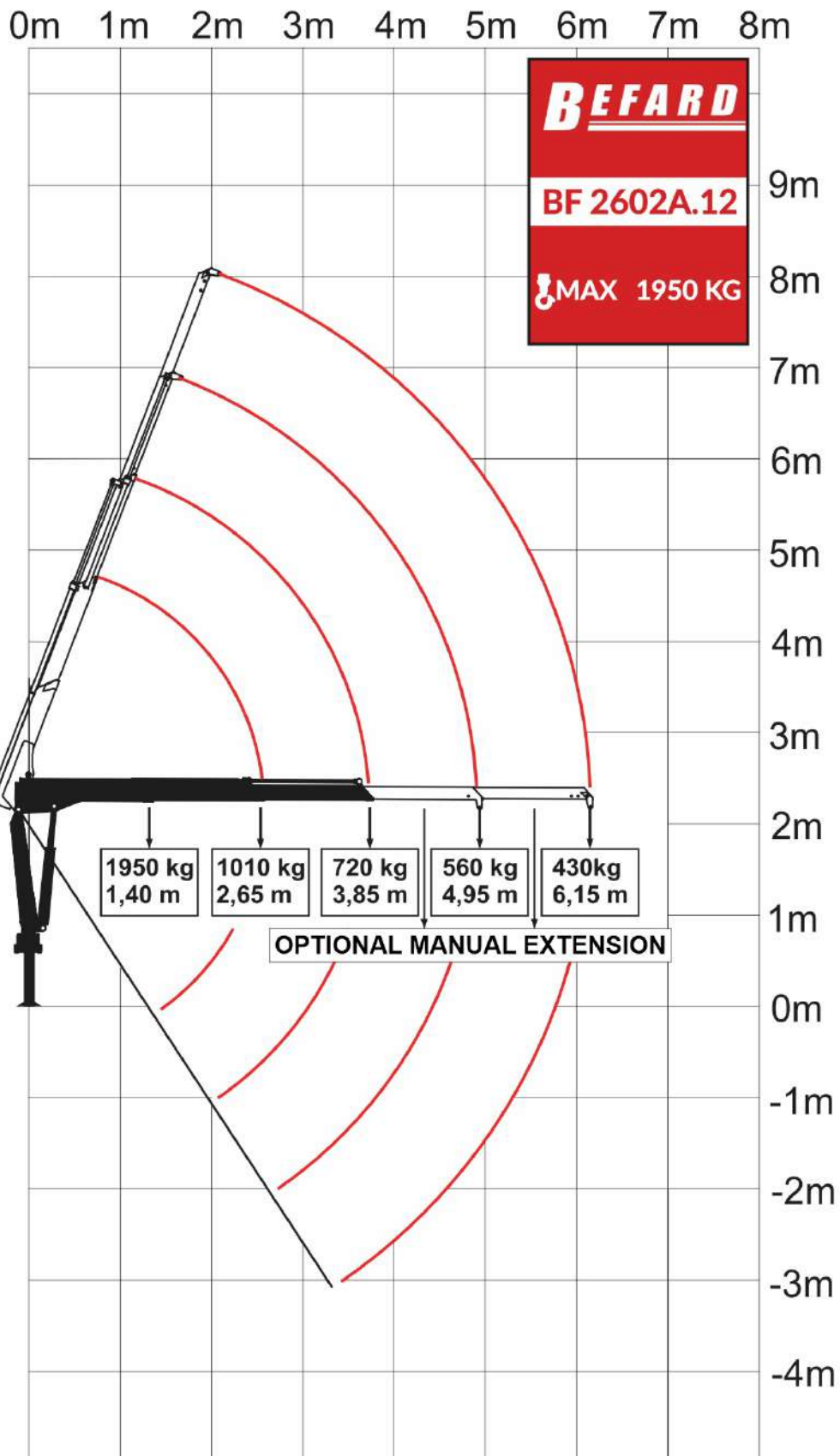
**TECHNICAL PARAMETERS****BF 2602A**

Lifting moment	28 kNm	
Maximum lifting capacity CE	990 kg	
Maximum lifting capacity	1950 kg	
Hydraulic extension	3850 mm	
Maximum reach with manual extensions	6150 mm	
Crane height	1800 mm	
Transport width	2050 mm	
Spacing of supports	2950 mm	
Rotation angle	180-360°	
The moment of rotation (16 MPa)	3,5 kNm	
Stroke angle	70°	
Downward tilt angle	60°	
Working pressure	185 bar	
Recommended pump	Working pressure	280 bar
	Flow	13 l/min
Weight (does not include support feet)	298 kg	

Recommended pump flow, given in the card, may change depending on the power supply and the specification of the device that will be mounted to the crane. In standard applications, this is the maximum value.



## BEFARD BF 2602A.12



**TECHNICAL PARAMETERS****BF 2602B**

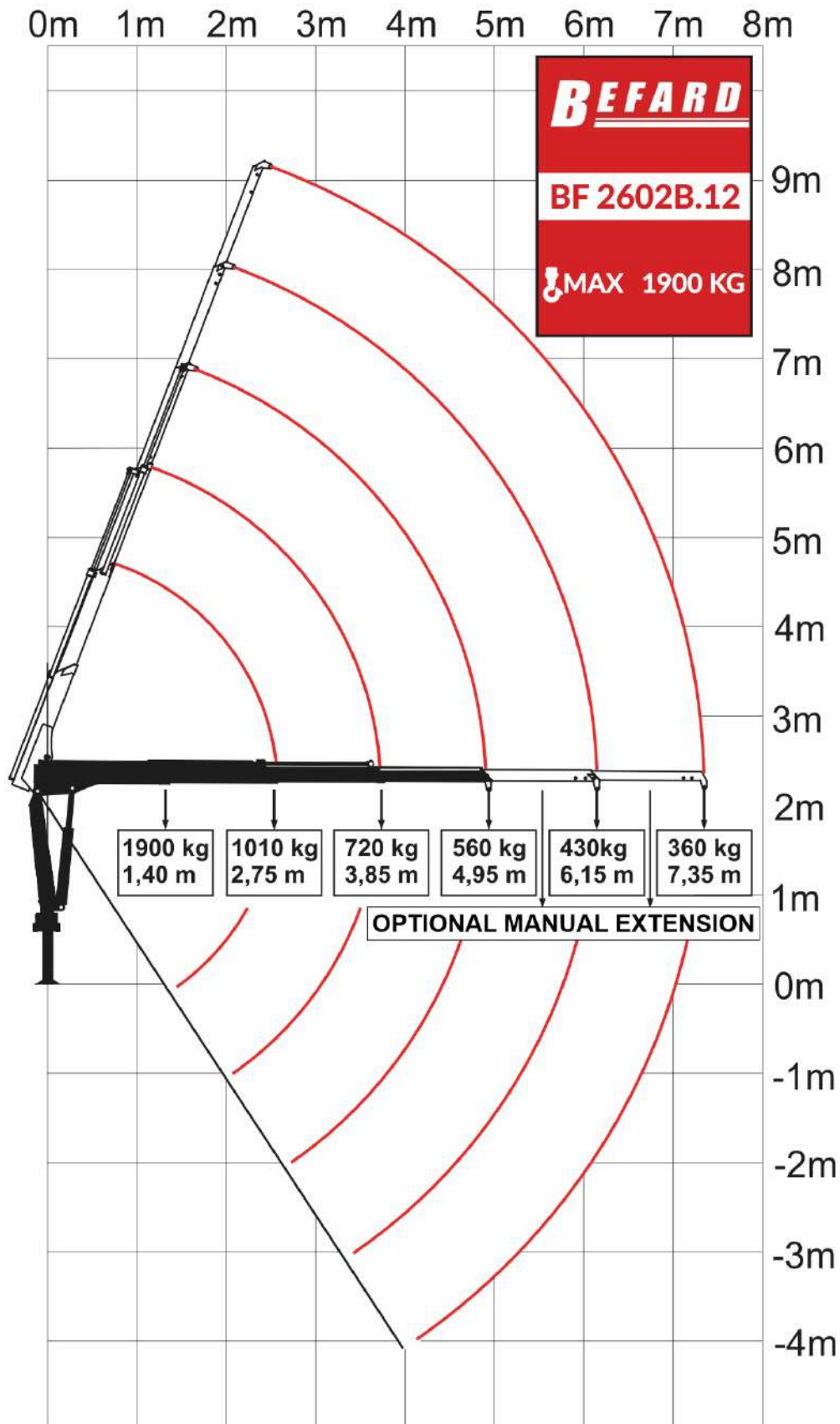
Lifting moment	28 kNm	
Maximum lifting capacity CE	990 kg	
Maximum lifting capacity	1900 kg	
Hydraulic extension	4950 mm	
Maximum reach with manual extensions	7350 mm	
Crane height	1800 mm	
Transport width	2050 mm	
Spacing of supports	2950 mm	
Rotation angle	180-360°	
The moment of rotation (16 MPa)	3,5 kNm	
Stroke angle	70°	
Downward tilt angle	60°	
Working pressure	185 bar	
Recommended pump	Working pressure	280 bar
	Flow	13 l/min
Weight (does not include support feet)	310 kg	

Recommended pump flow, given in the card, may change depending on the power supply and the specification of the device that will be mounted to the crane. In standard applications, this is the maximum value.





## BEFARD BF 2602B.12







Can handle the loading of heavy pallets



For every delivery truck



Robust construction

## SPECIFICATION

- The CE version meets the essential requirements of the Machinery Directive 2006/42 / CE and directive 2004/108/EC
- Safety STOP switch
- Double-action locks protecting the extension cylinders
- Reinforced hydraulic hoses
- Two-sided support, lowered (up-down) hydraulically
- Spring protection preventing uncontrolled sliding of supporting beams
- Hook 2t
- Radio control
- The possibility of adaptive development



Radio control