

BEFARD



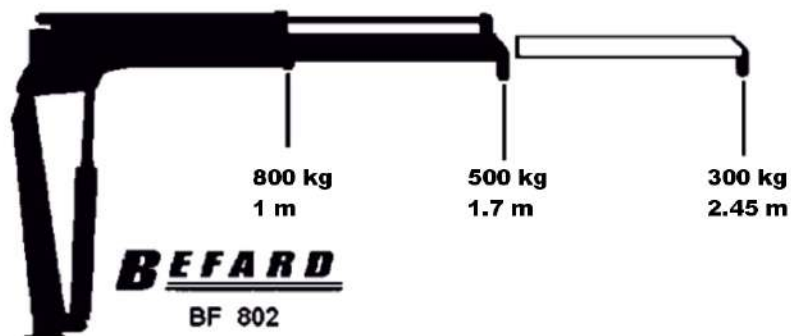
BEFARD series BF 802

www.befard.com

Find us:   

BF 802

The diagram shows the general technical parameters of the BF 802 crane capacity, intended both for the markets of EU countries and non-European markets.

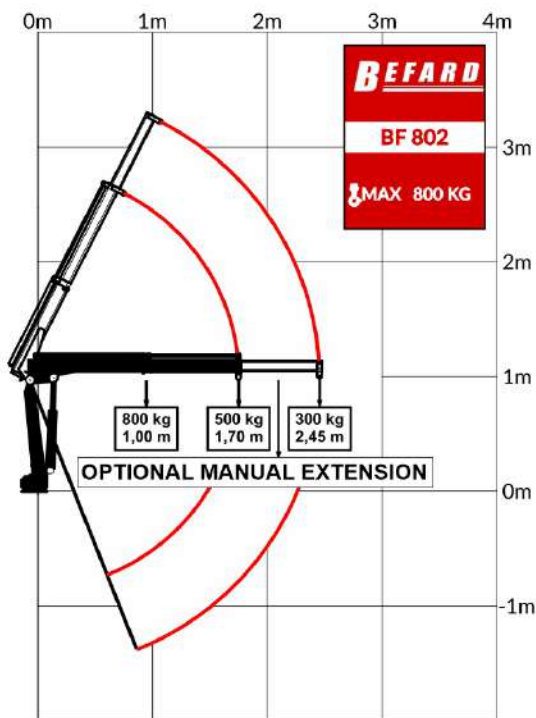


• Hydraulic extension: 1

• Manual extension: 1

TECHNICAL PARAMETERS

Lifting moment	5 kNm	
Maximum lifting capacity	800 kg	
Hydraulic extension	1700 mm	
Maximum reach with manual extensions	2450 mm	
Crane height	1100 mm	
Transport width	700 mm	
Spacing of supports	500-1000 mm	
Rotation angle	100-360°	
The moment of rotation (16 MPa)	3,5 kNm	
Stroke angle	63°	
Downward tilt angle	60°	
Working pressure	165 bar	
Recommended pump	Working pressure	165 bar
	Flow	9 l/min
Weight (does not include support feet)	100 kg	



The recommended pump flow, given in the card, may change depending on the power supply and the specification of the device that will be mounted to the crane. In standard applications, this is the maximum value.

SPECIFICATION

- The CE version meets the essential requirements of the Machinery Directive 2006/42 / CE and directive 2014/30 / EU
- Safety STOP switch
- Double-action locks protecting the extension cylinders
- Reinforced hydraulic hoses
- Manual support, optionally lowered (up-down) hydraulically
- Spring protection preventing uncontrolled sliding of supporting beams
- Hook 1.12t
- Radio control
- The possibility of adaptive development



Low weight



Most often chosen
for Pick-up



Guarantee of
quality

