

BEFARD TRAILER CRANE XJ 55



The BEFARD XJ **TRAILER CRANE** crane on a trailer is a modern crane solution. It is compatible with various types of grippers and can be used for both reloading and assembly of sandwich panels, roofs, doors, windows and steel structures.

DEVICE'S FEATURES XJ 55

- maximum load capacity 2400kg
- maximum vertical range over 13,0m - with crane boom tip range ~ 14,0m
- crane radio remote control
- four hydraulic extensions and one manual
- powered by a gasoline engine (optional additionally electric 230V)
- rotating column
- four supports lowered hydraulically
- type of trailer - two-axle
- length, width of the trailer: about 4400x2020mm*
- trailer GVW 2300kg
- work mode - spacing of supports feet 4650x4760mm

RADIO CONTROL
AS STANDARD



OPTIONAL EQUIPMENT

- outrigger mats available

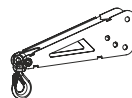
Electric (on-grid power)



Trailer mover



Crane boom tip



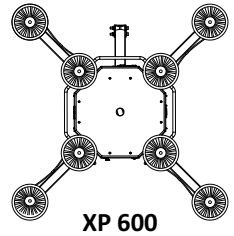
Hydraulic winch



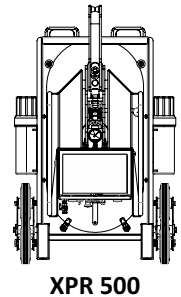
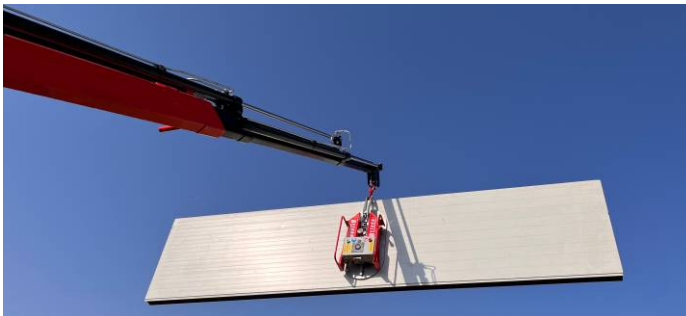
*dimensions of the trailer and the method of opening the side walls may differ from those given in the catalogue

OPTIONAL EQUIPMENT

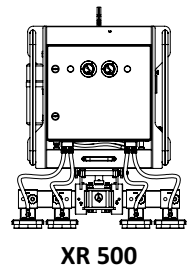
Vacuum gripper for glazing XP 600



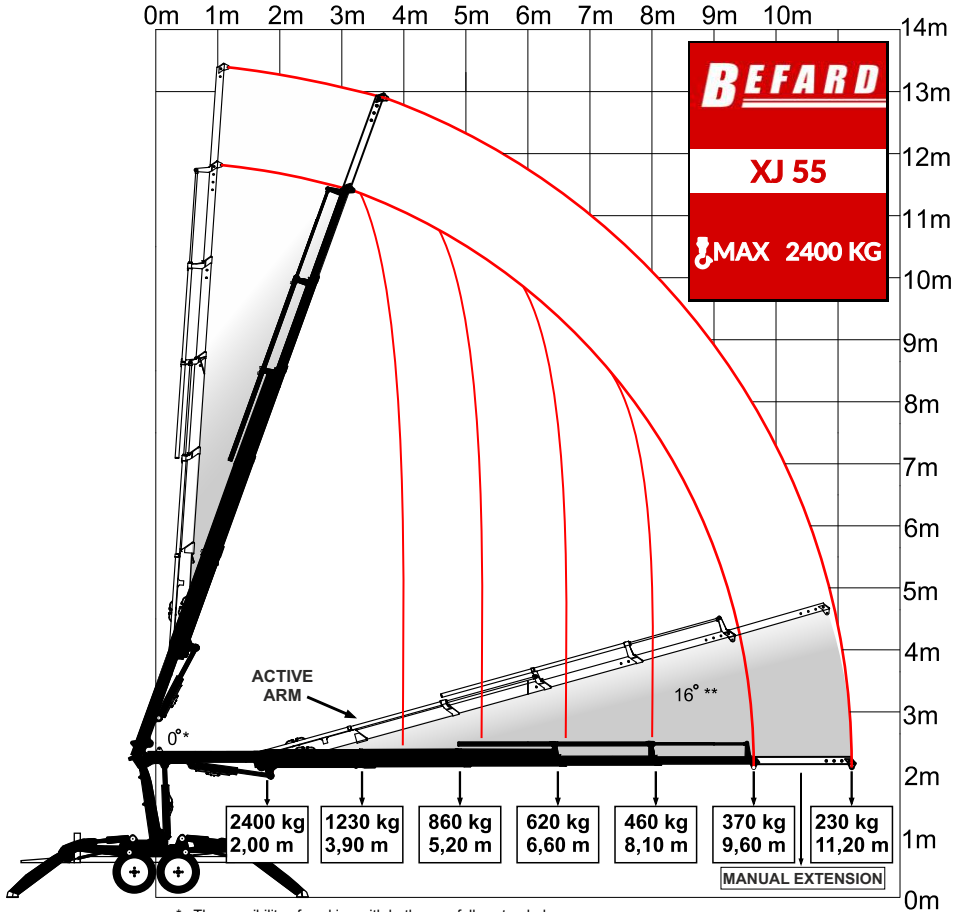
Multifunctional vacuum gripper XPR 500



Vacuum gripper for sandwich panels XR 500



XJ 55 BEFARD TRAILER CRANE



* The possibility of working with both arms fully extended

** An active arm with linkage on crane articulations, allowing for an additional break up to 16th rise

Equipping the device with a winch reduces the lifting capacity by 100 kg

The device meets the requirements of the Machinery Directive 2006/42/EC and Directive 2014/30/EU

