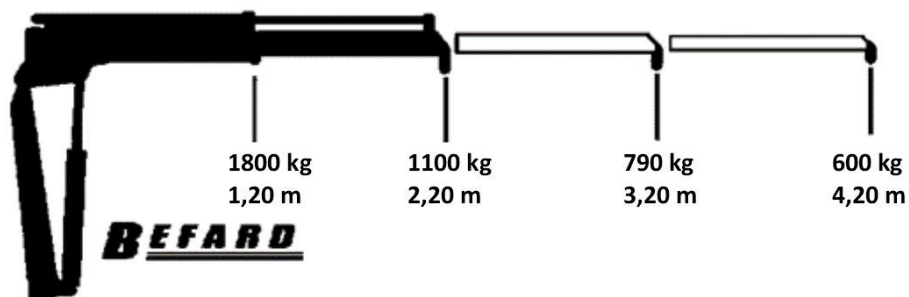




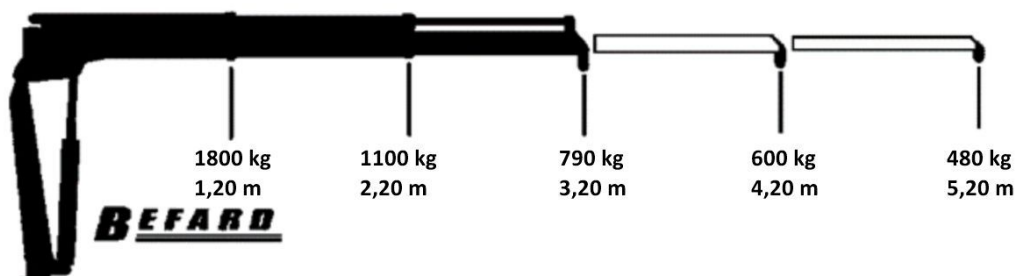
BEFARD series BF 1802

BF 1802

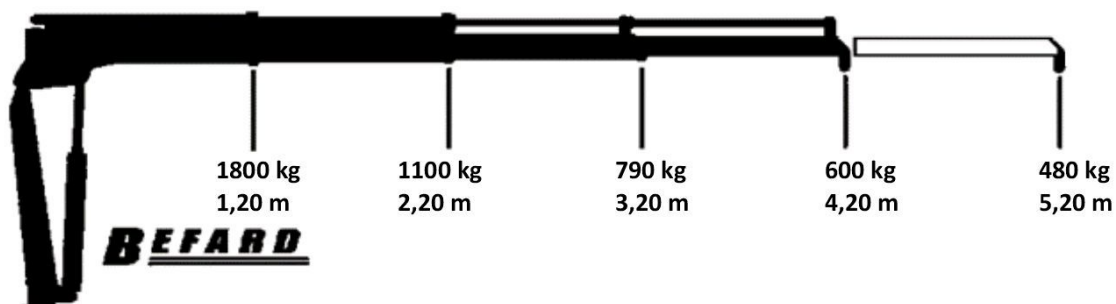
The diagrams show the general technical parameters of the lifting capacity of the various versions of BF 1802 cranes, intended both for the markets of the EU countries and markets non-European. Crane for CE version (for European markets) supplied with capacity charts not exceeding 990 kg.



- Hydraulic extension: 1
- Manual extension: 2



- Hydraulic extension: 2
- Manual extension: 2



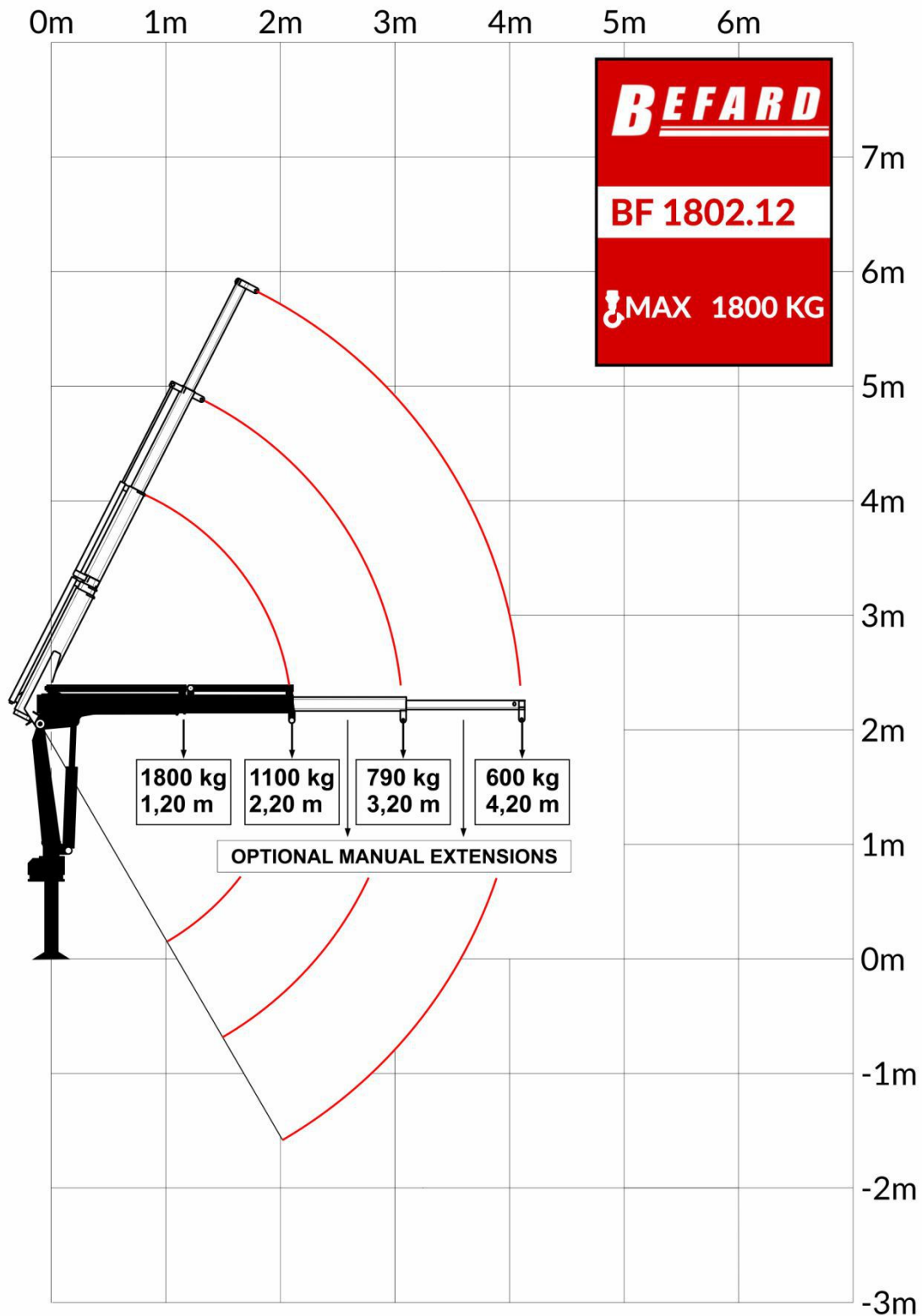
- Hydraulic extension: 3
- Manual extension: 1

TECHNICAL PARAMETERS**BF 1802**

Lifting moment	20 kNm	
Maximum lifting capacity CE	990 kg	
Maximum lifting capacity	1800 kg	
Hydraulic extension	2200 mm	
Maximum reach with manual extensions	4200 mm	
Crane height	1600 mm	
Transport width	1900 mm	
Spacing of supports	3300 mm	
Rotation angle	210-360°	
The moment of rotation (18 MPa)	3,5 kNm	
Stroke angle	63°	
Downward tilt angle	60°	
Working pressure	185 bar	
Recommended pump	Working pressure	280 bar
	Flow	13 l/min
Weight (does not include support feet)	255 kg	



BEFARD BF 1802.12



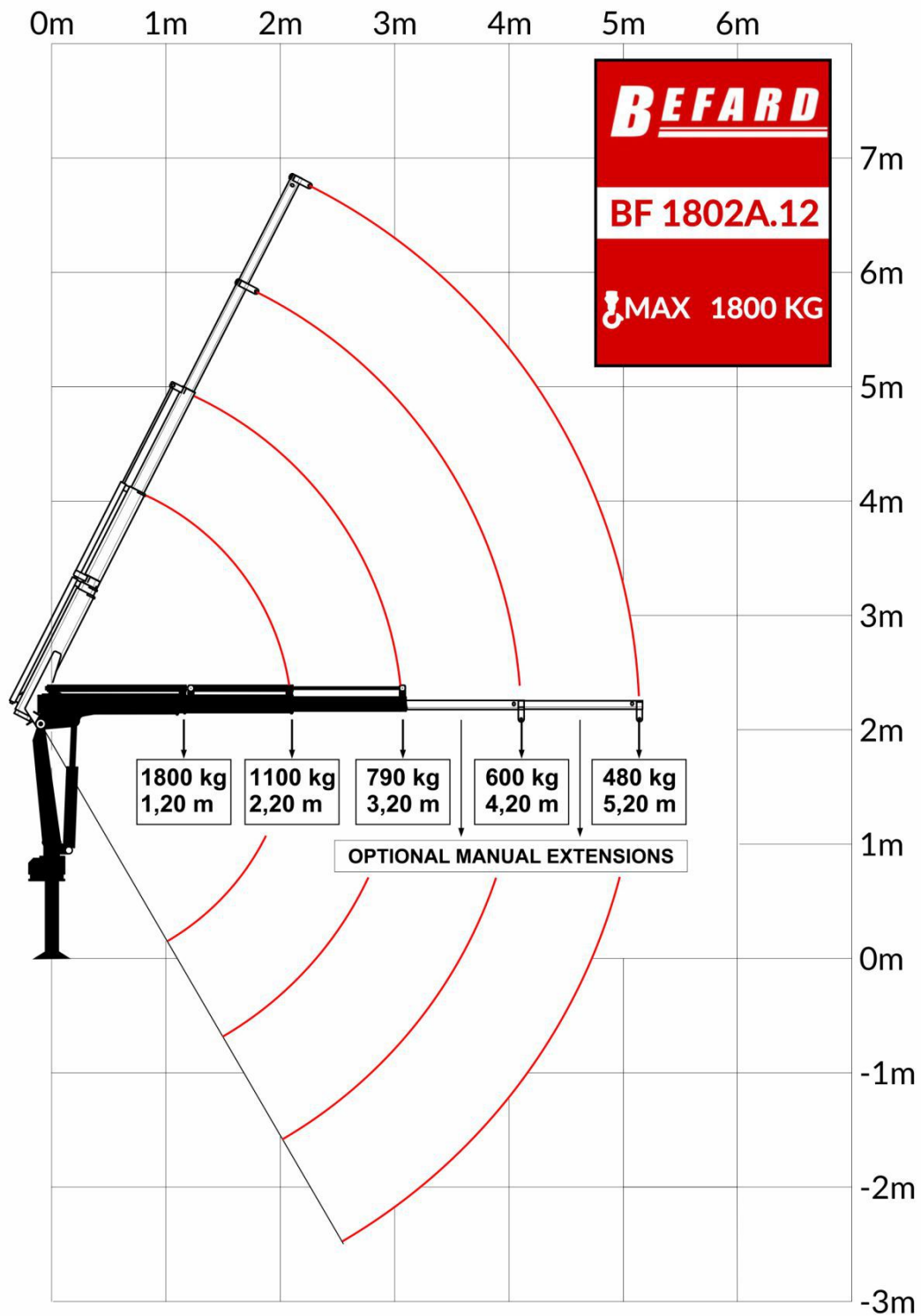
BF 1802

TECHNICAL PARAMETERS

BF 1802A

Lifting moment	20 kNm	
Maximum lifting capacity CE	990 kg	
Maximum lifting capacity	1800 kg	
Hydraulic extension	3200 mm	
Maximum reach with manual extensions	5200 mm	
Crane height	1600 mm	
Transport width	1900 mm	
Spacing of supports	3300 mm	
Rotation angle	210-360°	
The moment of rotation (18 MPa)	3,5 kNm	
Stroke angle	63°	
Downward tilt angle	60°	
Working pressure	185 bar	
Recommended pump	Working pressure	280 bar
	Flow	13 l/min
Weight (does not include support feet)	274 kg	

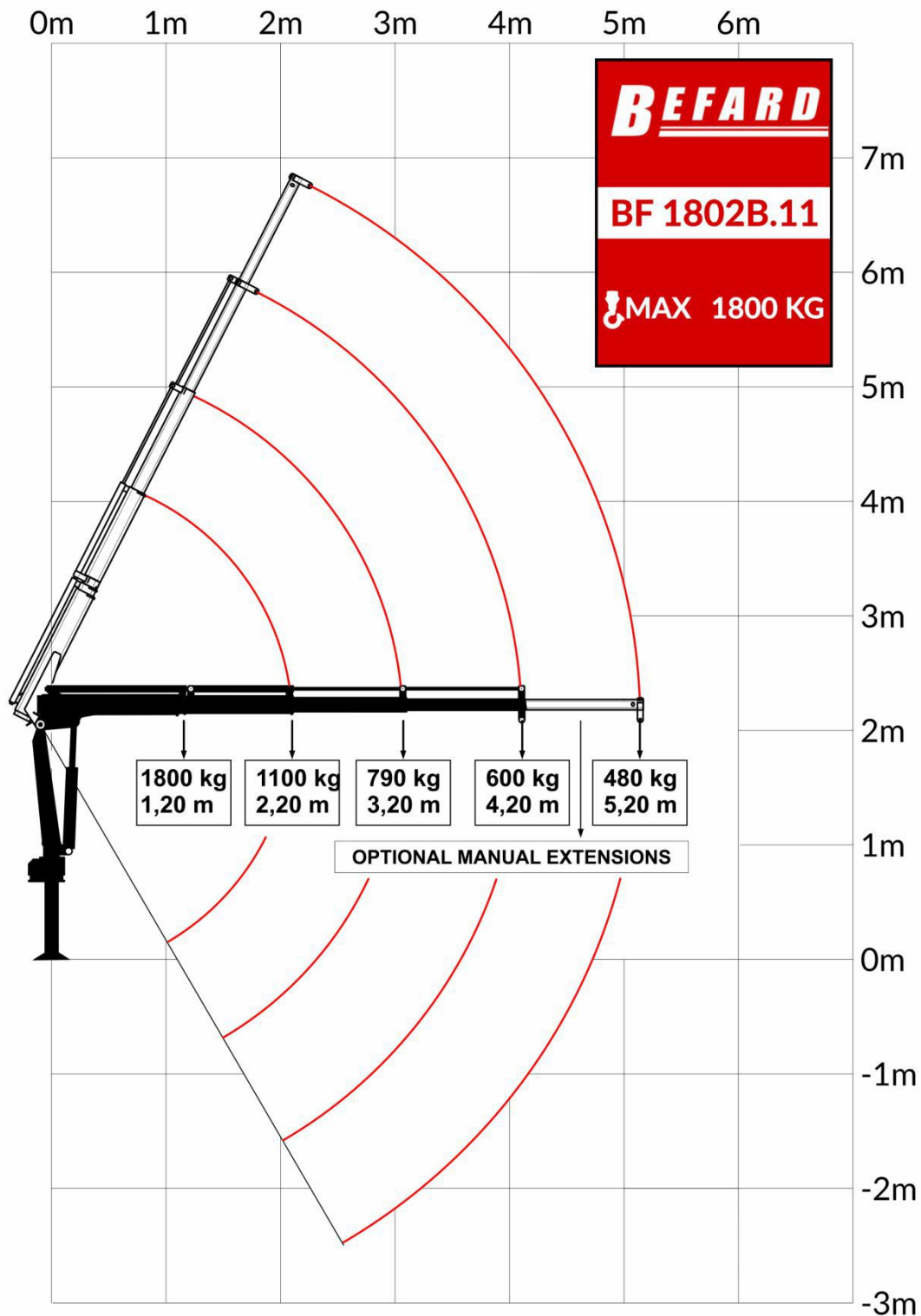


BEFARD BF 1802A.12**A**

TECHNICAL PARAMETERS**BF 1802B**

Lifting moment	20 kNm	
Maximum lifting capacity CE	990 kg	
Maximum lifting capacity	1800 kg	
Hydraulic extension	4200 mm	
Maximum reach with manual extensions	5200 mm	
Crane height	1600 mm	
Transport width	1900 mm	
Spacing of supports	3300 mm	
Rotation angle	210-360°	
The moment of rotation (18 MPa)	3,5 kNm	
Stroke angle	63°	
Downward tilt angle	60°	
Working pressure	185 bar	
Recommended pump	Working pressure	280 bar
	Flow	13 l/min
Weight (does not include support feet)	286 kg	



BEFARD BF 1802B.11**B**

BF 1802



Slight



Can be mounted on a car



Double-sided supports



SPECIFICATION

- CE version, meets the requirements of the essential machinery directive 2006/42/EC and 2004/108 / EC directive
- Safety STOP switch
- Double-acting locks to protect the extension cylinders
- Reinforced hydraulic hoses
- Supports on both sides, lowered (up-down) hydraulically
- Spring protection preventing uncontrolled sliding of supporting beams
- Hook 2t
- Radio control as standard



Radio control