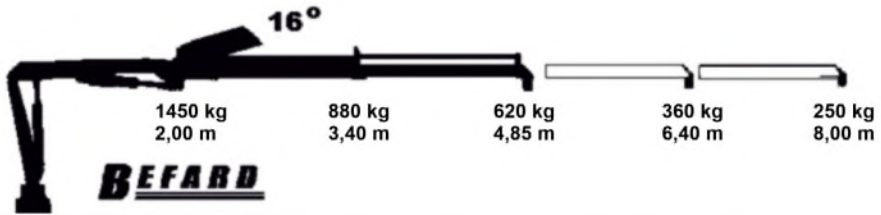




***BEFARD series XF 3002***

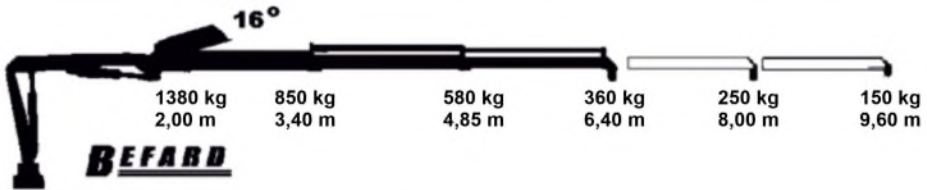
# XF 3002

The diagram shows the general technical parameters of the lifting capacity of the different versions XF 3002 cranes intended both for the markets of EU countries, as well as non-European markets.



• Hydraulic extension: 1

• Manual extension: 2



• Hydraulic extension: 2

• Manual extension: 2



• Hydraulic extension: 3

• Manual extension: 1

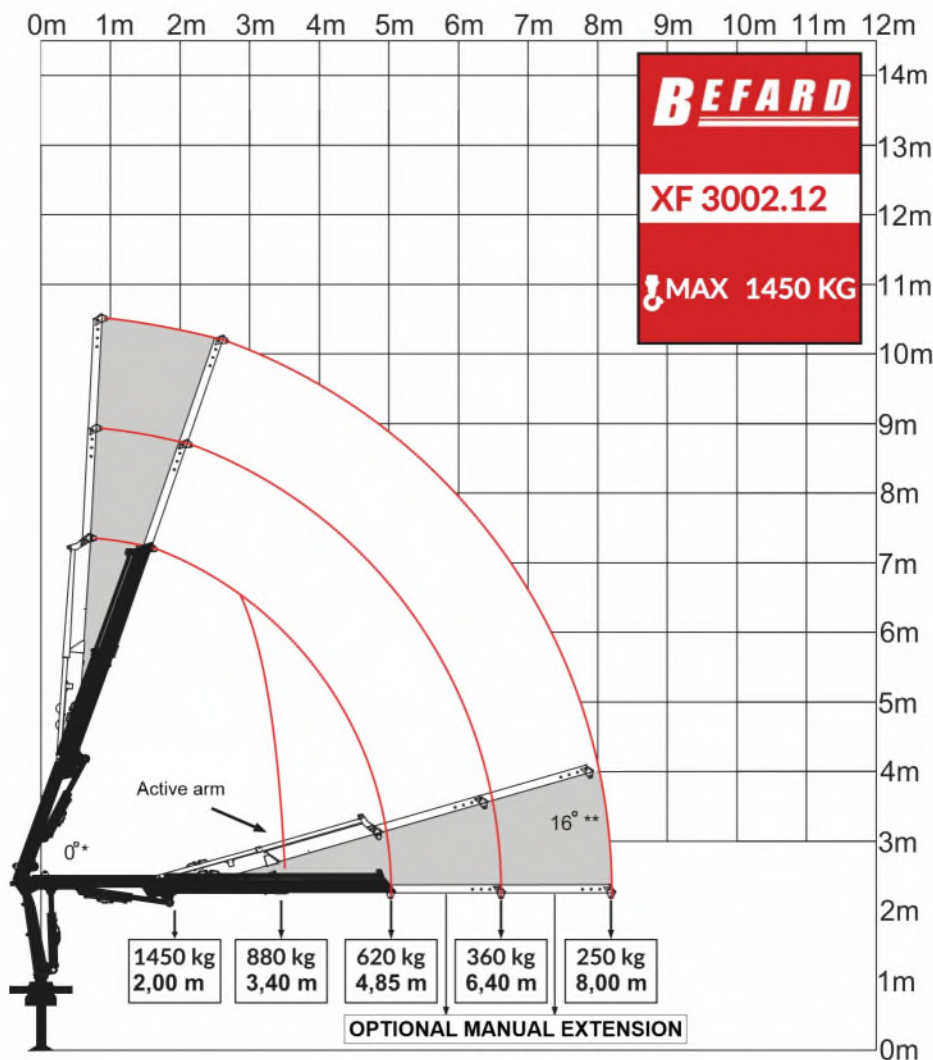
**TECHNICAL PARAMETERS****XF 3002**

Lifting moment	29 kNm	
Maximum lifting capacity	1450 kg	
Hydraulic extension	4850 mm	
Maximum reach with manual extensions	8000 mm	
Crane height	1700 mm	
Transport width	1850 mm	
Spacing of supports	4100 mm	
Rotation angle	180-360°	
The moment of rotation (18 MPa)	5,4 kNm	
The angle of the stroke	82°	
Downward Tilt Angle	45°	
Working pressure	270 bar	
Recommended pump	Working pressure	280 bar
	Flow	16 l/min
Weight	480 kg	

Recommended pump flow, given in the card, may change depending on the power supply and the specification of the device that will be mounted to the crane. In standard applications, this is the maximum value.



## BEFARD XF 3002



\* Ability to work with both arms fully extended

\*\* An active arm with a knee joint, allowing to obtain an additional break up to 16 rises

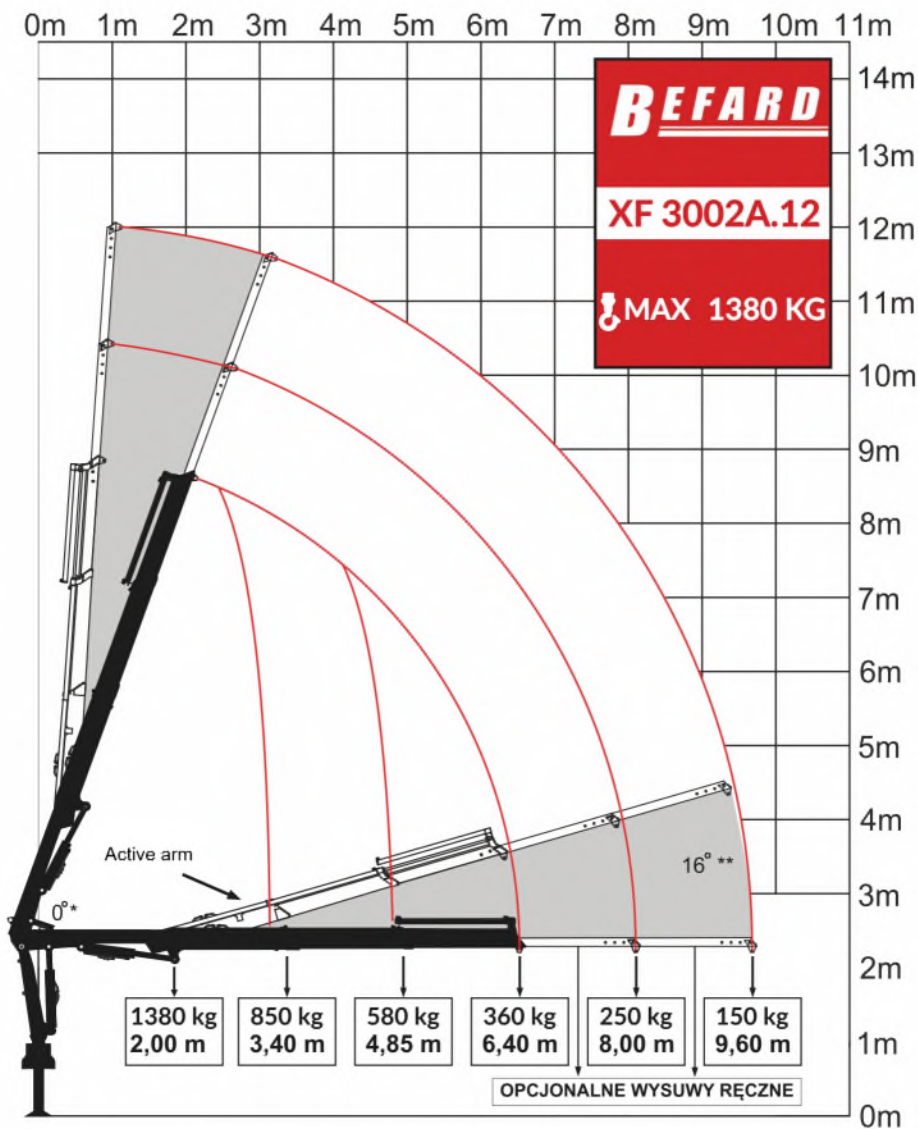
**TECHNICAL PARAMETERS****XF 3002A**

Lifting moment	28 kNm	
Maximum lifting capacity	1380 kg	
Hydraulic extension	6400 mm	
Maximum reach with manual extensions	9600 mm	
Crane height	1700 mm	
Transport width	1900 mm	
Spacing of supports	4100 mm	
Rotation angle	180-360°	
The moment of rotation (18 MPa)	5,4 kNm	
The angle of the stroke	82°	
Downward Tilt Angle	45°	
Working pressure	270 bar	
Recommended pump	Working pressure	280 bar
	Flow	16 l/min
Weight	510 kg	

Recommended pump flow, given in the card, may change depending on the power supply and the specification of the device that will be mounted to the crane. In standard applications, this is the maximum value.



## BEFARD XF 3002A.12



\* Ability to work with both arms fully extended

\*\* An active arm with a knee joint, allowing to obtain an additional break up to 16 rises

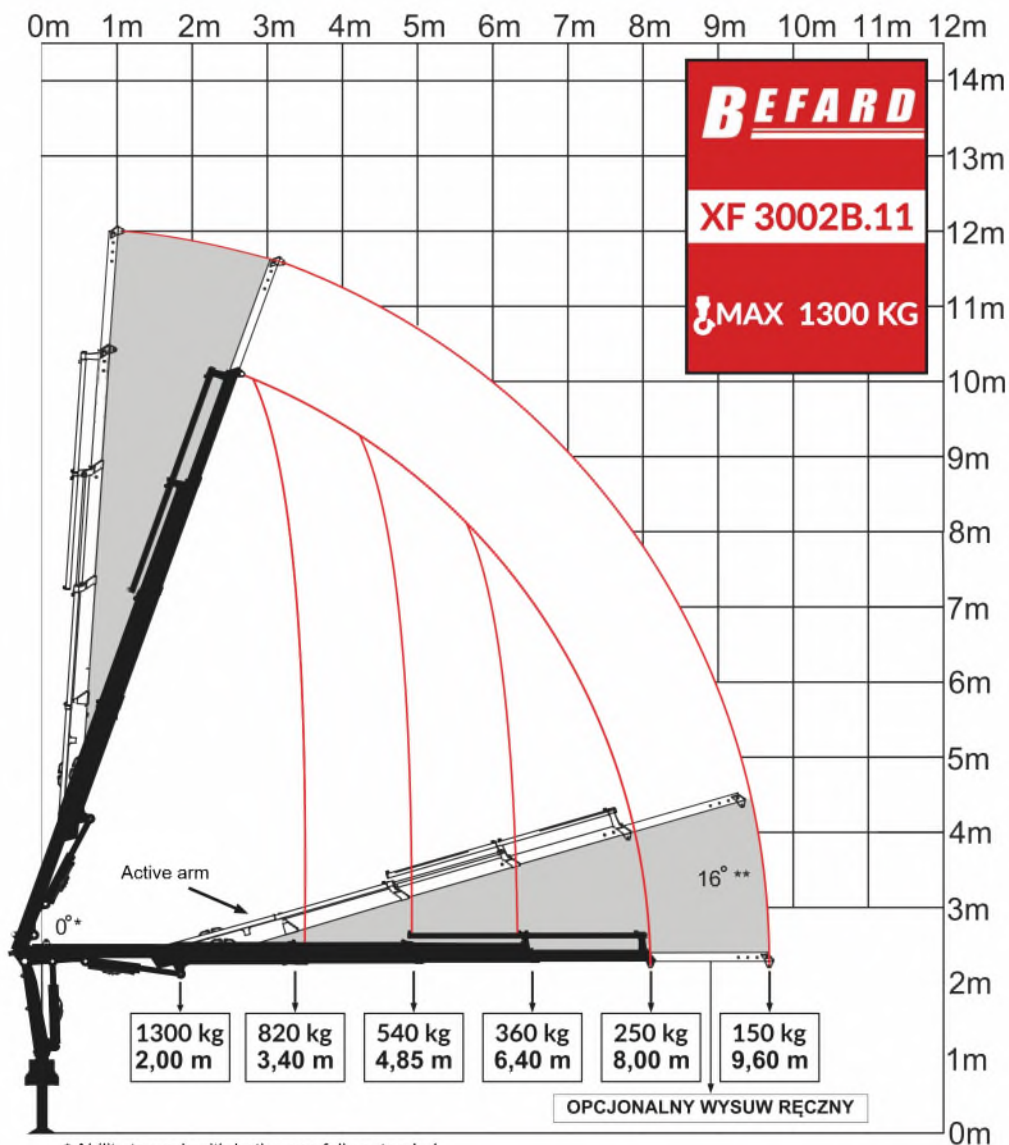
**TECHNICAL PARAMETERS****XF 3002B**

Lifting moment	26 kNm	
Maximum lifting capacity	1300 kg	
Hydraulic extension	8000 mm	
Maximum reach with manual extensions	9600 mm	
Crane height	1700 mm	
Transport width	2000 mm	
Spacing of supports	4100 mm	
Rotation angle	180-360°	
The moment of rotation (18 MPa)	5,4 kNm	
The angle of the stroke	82°	
Downward Tilt Angle	45°	
Working pressure	270 bar	
Recommended pump	Working pressure	280 bar
	Flow	16 l/min
Weight	535 kg	

Recommended pump flow, given in the card, may change depending on the power supply and the specification of the device that will be mounted to the crane. In standard applications, this is the maximum value.



## BEFARD XF 3002B.11



\* Ability to work with both arms fully extended

\*\* An active arm with a knee joint, allowing to obtain an additional break up to 16 rises





The lightest crane  
two-armed



High-quality  
hydraulic installation



Slide bushings  
made of bronze



## **SPECIFICATION**

- The CE version meets the essential requirements of the Machinery Directive 2006/42/EC and directive 2004/108/EC
- Safety STOP switch
- Double-action locks protecting the extension cylinders
- Reinforced hydraulic hoses
- Two-sided support, lowered (up-down) hydraulically
- Spring protection preventing uncontrolled sliding of supporting beams
- Hook 2t
- Radio control
- The possibility of adaptive development
- Electronic overload protection system
- Bronze sliding bushings



Radio control