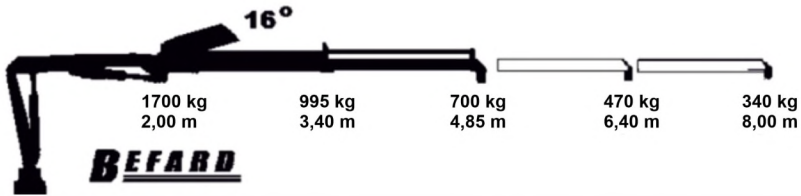




BEFARD series XF 3602

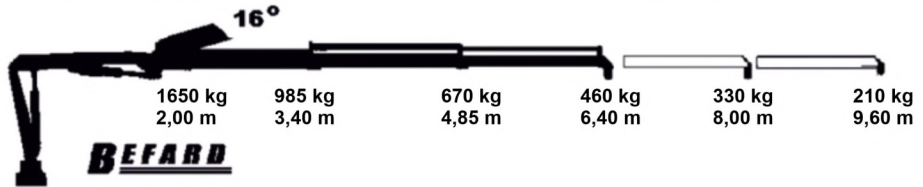
XF 3602

The diagram shows the general technical parameters of the lifting capacity of the different versions XF 3602 cranes intended both for the markets of EU countries, as well as non-European markets.



• Hydraulic extension: 1

• Manual extension: 2



• Hydraulic extension: 2

• Manual extension: 2



• Hydraulic extension: 3

• Manual extension: 1



• Hydraulic extension: 4

• Manual extension: 0

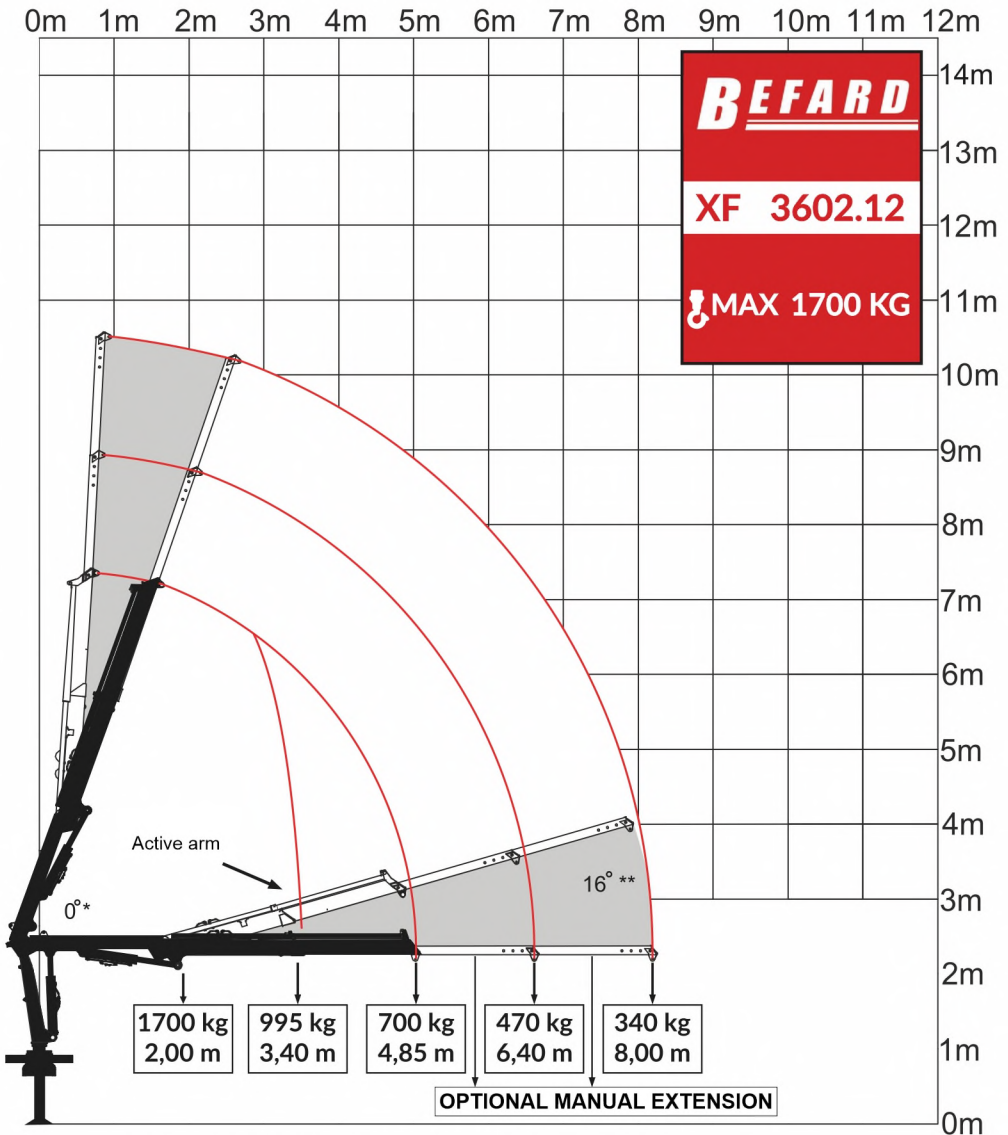
TECHNICAL PARAMETERS**XF 3602**

Lifting moment	37,5 kNm
Maximum lifting capacity	~1700 kg
Hydraulic extension	4850 mm
Maximum reach with manual extensions	8000 mm
Crane height	1700 mm
Transport width	1850 mm
Spacing of supports	4100 mm
Rotation angle	180-360°
The moment of rotation (18 MPa)	5,4 kNm
The angle of the stroke	82°
Downward Tilt Angle	45°
Working pressure	270 bar
Recommended pump	Working pressure 280 bar
	Flow 16 l/min
Weight	520 kg

Recommended pump flow, given in the card, may change depending on the power supply and the specification of the device that will be mounted to the crane. In standard applications, this is the maximum value.



BEFARD XF 3602.12



* Ability to work with both arms fully extended

** An active arm with a knee joint, allowing to obtain an additional break up to 16° rises

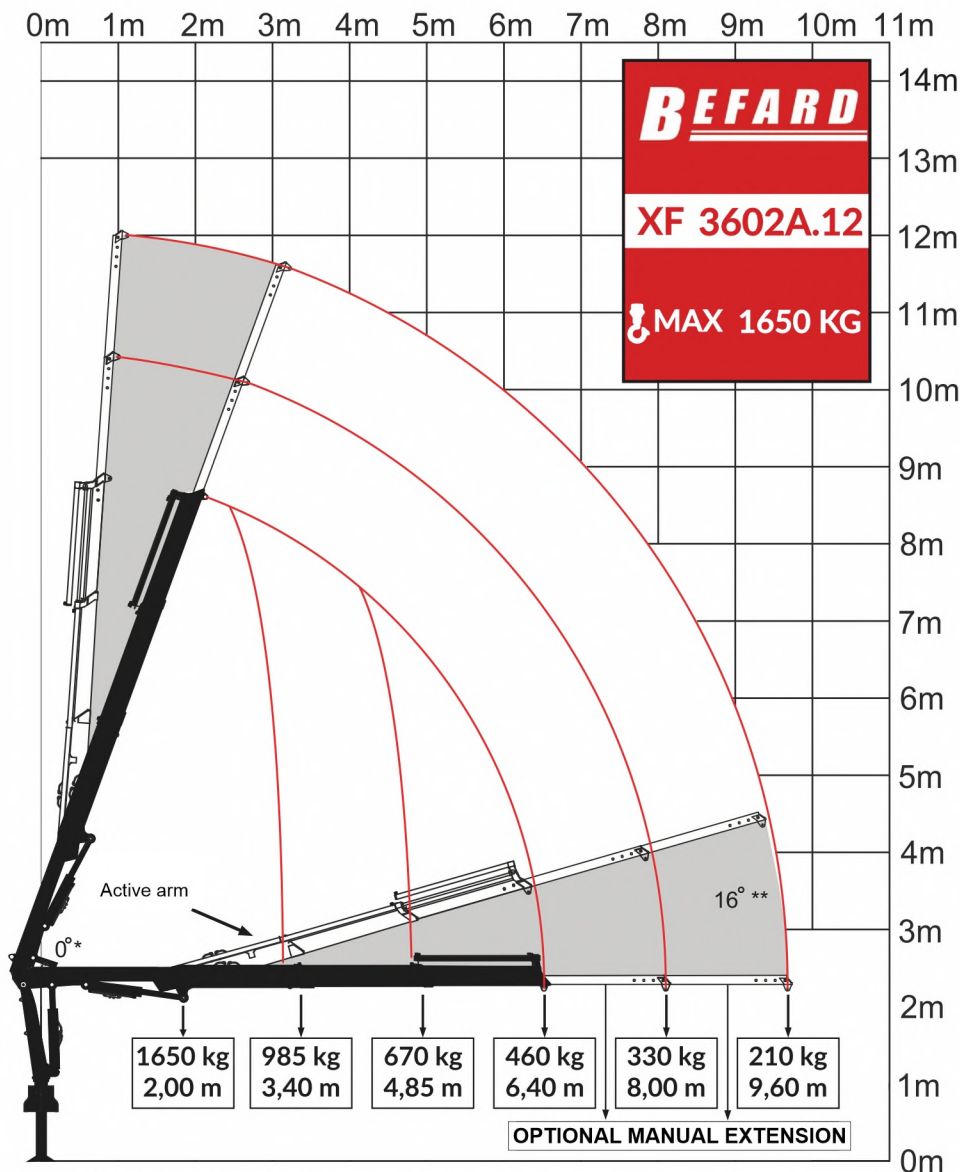
TECHNICAL PARAMETERS**XF 3602A**

Lifting moment	36,5 kNm	
Maximum lifting capacity	1650 kg	
Hydraulic extension	6400 mm	
Maximum reach with manual extensions	9600 mm	
Crane height	1700 mm	
Transport width	1900 mm	
Spacing of supports	4100 mm	
Rotation angle	180-360°	
The moment of rotation (18 MPa)	5,4 kNm	
The angle of the stroke	82°	
Downward Tilt Angle	45°	
Working pressure	270 bar	
Recommended pump	Working pressure	280 bar
	Flow	16 l/min
Weight	550 kg	

Recommended pump flow, given in the card, may change depending on the power supply and the specification of the device that will be mounted to the crane. In standard applications, this is the maximum value.



BEFARD XF 3602A.12



* Ability to work with both arms fully extended

** An active arm with a knee joint, allowing to obtain an additional break up to 16 rises

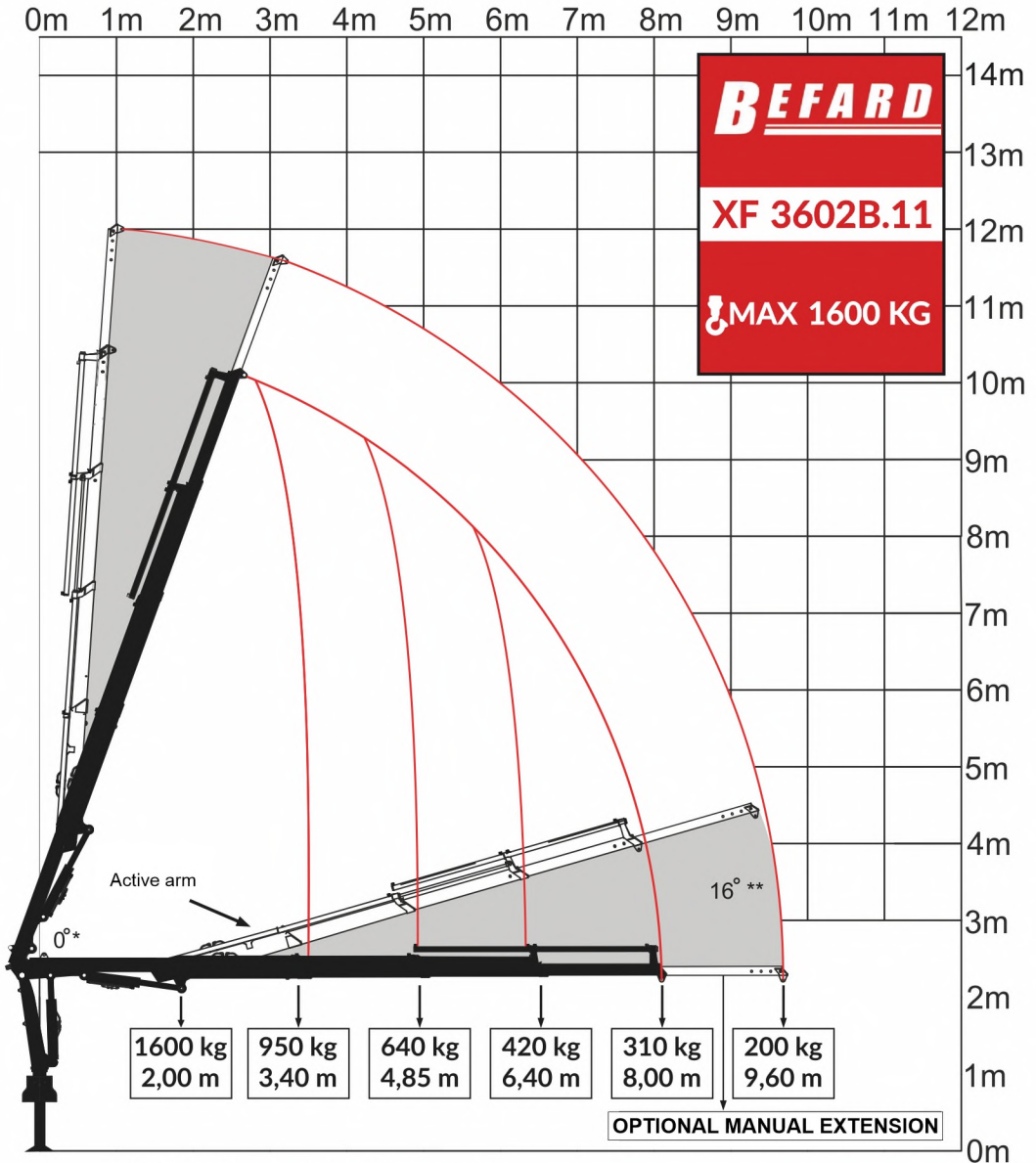
TECHNICAL PARAMETERS**XF 3602B**

Lifting moment	33 kNm	
Maximum lifting capacity	1600 kg	
Hydraulic extension	8000 mm	
Maximum reach with manual extensions	9600 mm	
Crane height	1700 mm	
Transport width	2000 mm	
Spacing of supports	4100 mm	
Rotation angle	180-360°	
The moment of rotation (18 MPa)	5,4 kNm	
The angle of the stroke	82°	
Downward Tilt Angle	45°	
Working pressure	270 bar	
Recommended pump	Working pressure	280 bar
	Flow	16 l/min
Weight	585 kg	

Recommended pump flow, given in the card, may change depending on the power supply and the specification of the device that will be mounted to the crane. In standard applications, this is the maximum value.



BEFARD XF 3602B.12



* Ability to work with both arms fully extended

** An active arm with a knee joint, allowing to obtain an additional break up to 16 rises

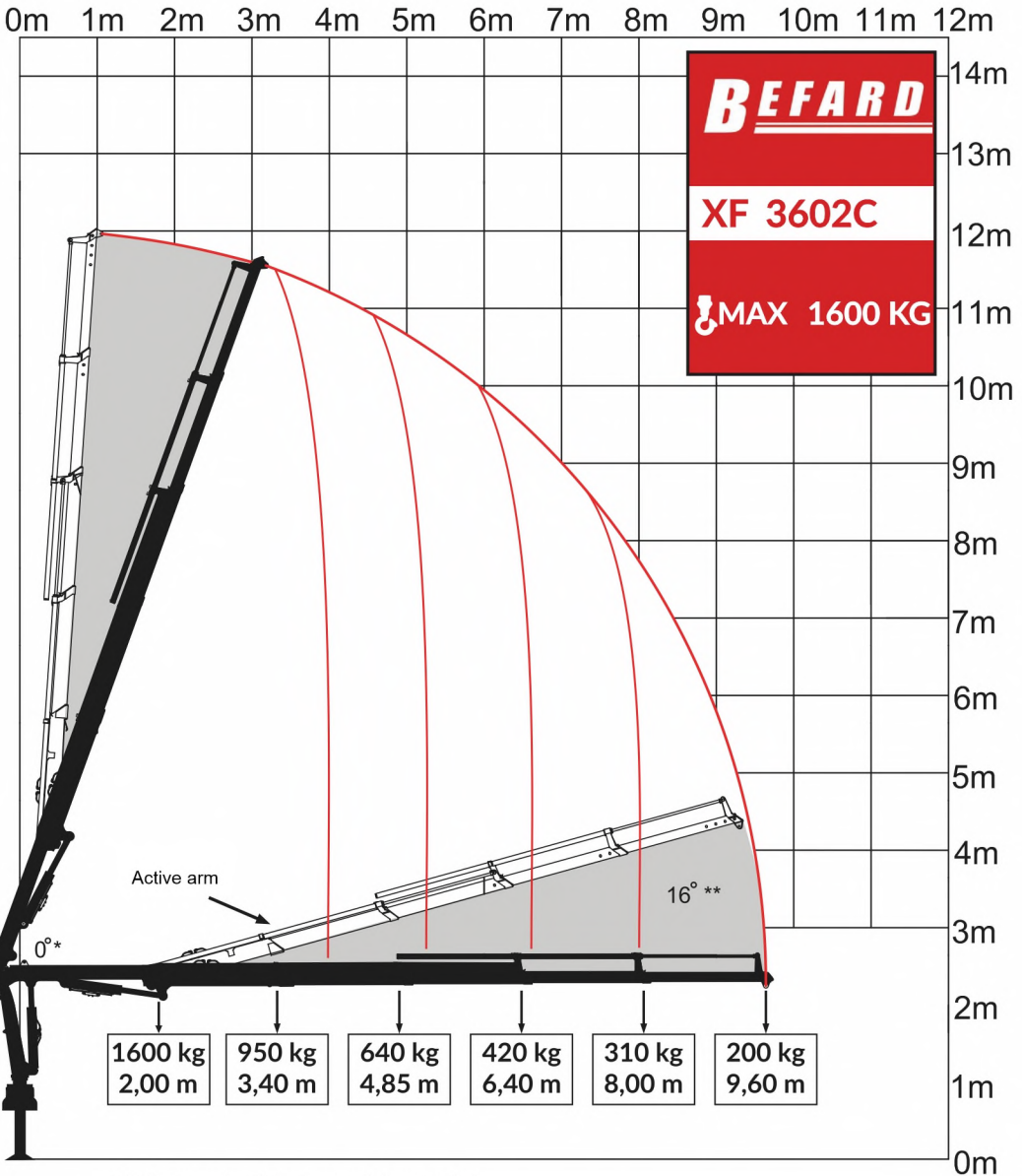
TECHNICAL PARAMETERS**XF 3602B**

Lifting moment		32 kNm
Maximum lifting capacity		1600 kg
Hydraulic extension		9600 mm
Crane height		1700 mm
Transport width		2050 mm
Spacing of supports		4100 mm
Rotation angle		180-360°
The moment of rotation (18 MPa)		5,4 kNm
The angle of the stroke		82°
Downward Tilt Angle		45°
Working pressure		270 bar
Recommended pump	Working pressure	280 bar
	Flow	16 l/min
Weight		610 kg

Recommended pump flow, given in the card, may change depending on the power supply and the specification of the device that will be mounted to the crane. In standard applications, this is the maximum value.



BEFARD XF 3602C.11



* Ability to work with both arms fully extended

** An active arm with a knee joint, allowing to obtain an additional break up to 16 rises

SPECIFICATION

- The CE version meets the essential requirements of the Machinery Directive 2006/42/EC and directive 2004/108/EC
- Safety STOP switch
- Double-action locks protecting the extension cylinders
- Reinforced hydraulic hoses
- Two-sided support, lowered (up-down) hydraulically
- Spring protection preventing uncontrolled sliding of supporting beams
- Hook
- Radio control
- Electronic overload protection system
- Bronze sliding bushings



Radio control





Can be mounted
on 3,5t GVW



Vertical range
over 11m



Radio control