



BEFARD series XF 9002

XF 9002

BEFARD XF is a series of two-arm loading cranes intended for installation on delivery vehicles and smaller trucks. Depending on the specific configuration, the cranes BEFARD XF can be equipped with one, two, three or even four hydraulic extensions. The increased number of arms allows the machine to work on larger distances, which is very important when installing windows.



Lifting capacity
up to 2,400 kg



Active
arm: 16 °



Range
above 16 m.



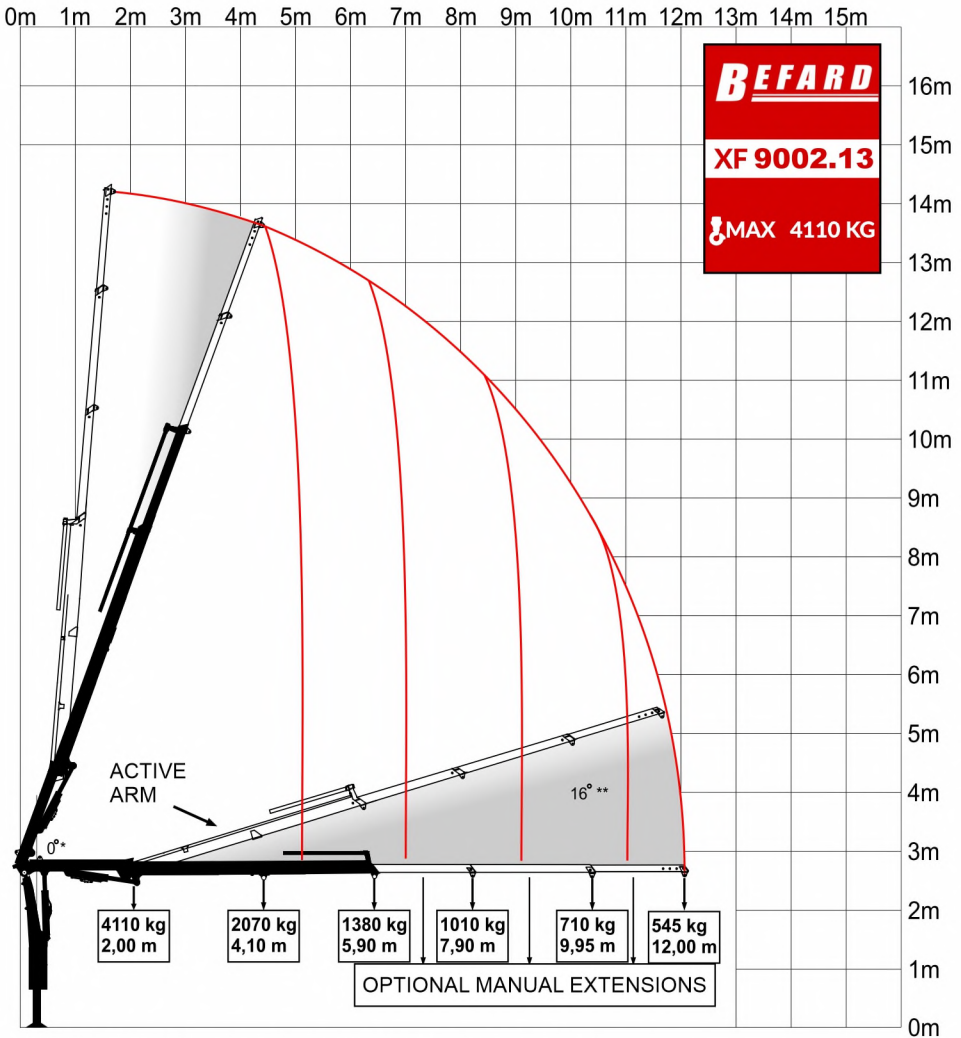
Technical data**XF 9002**

Lifting moment	8,5 tm	
Maximum capacity	4110 kg	
Hydraulic feed	5900 mm	
Maximum reach with manual extensions	12000 mm (opcjonalnie)	
Crane height	1970 mm	
Transport width	2200 mm	
Extend the support	5400 mm	
Rotation angle	180-390°	
Rotation torque (32 Mpa)	17,7 kNm	
Extension stroke angle	70° +16°	
Downward Tilt Angle	65°	
Working pressure	275 bar	
Recommended pump	Working pressure	350 bar
	Flow	25 l/min
Weight	980 kg	

The recommended pump flow, given in the card, may change depending on the power supply and the specification of the device that will be mounted to the crane. In standard applications, this is the maximum value.



BEFARD XF 9002.12



* The possibility of working with both arms fully extended

** An Active arm with linkage on crane articulations, allowing for an additional break up to 16° rise

Technical data**XF 9002A**

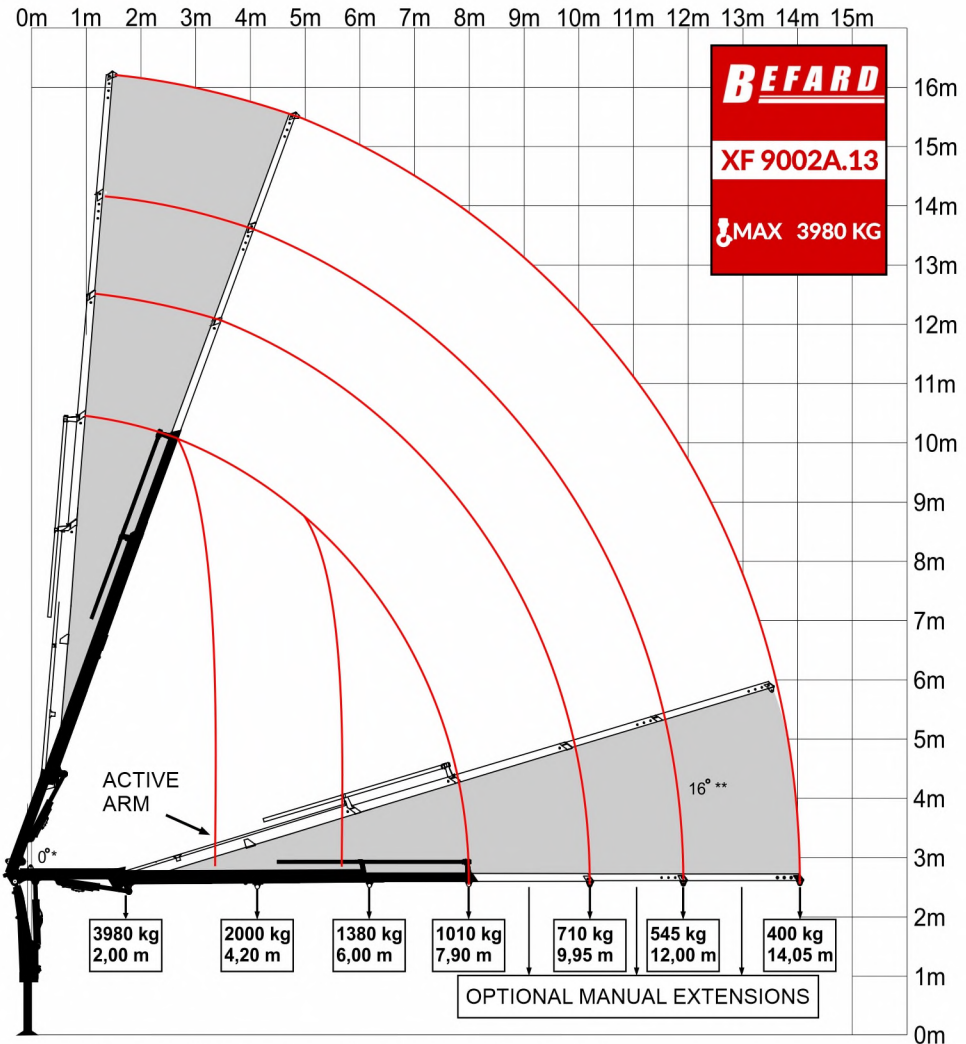
Lifting moment	8,4 tm	
Maximum capacity	3980 kg	
Hydraulic feed	7900 mm	
Maximum reach with manual extensions	14050 mm <small>(opcjonalnie)</small>	
Crane height	1970 mm	
Transport width	2200 mm	
Extend the support	5400 mm	
Rotation angle	180-390°	
Rotation torque (32 Mpa)	17,7 kNm	
Extension stroke angle	70° + 16°	
Downward Tilt Angle	65°	
Working pressure	275 bar	
Recommended pump	Working pressure	350 bar
	Flow	25 l/min
Weight	1050 kg	

The recommended pump flow, given in the card, may change depending on the power supply and the specification of the device that will be mounted to the crane. In standard applications, this is the maximum value.



BEFARD XF 9002A.13

A



* The possibility of working with both arms fully extended

** An Active arm with linkage on crane articulations, allowing for an additional break up to 16° rise

Technical data**XF 9002B**

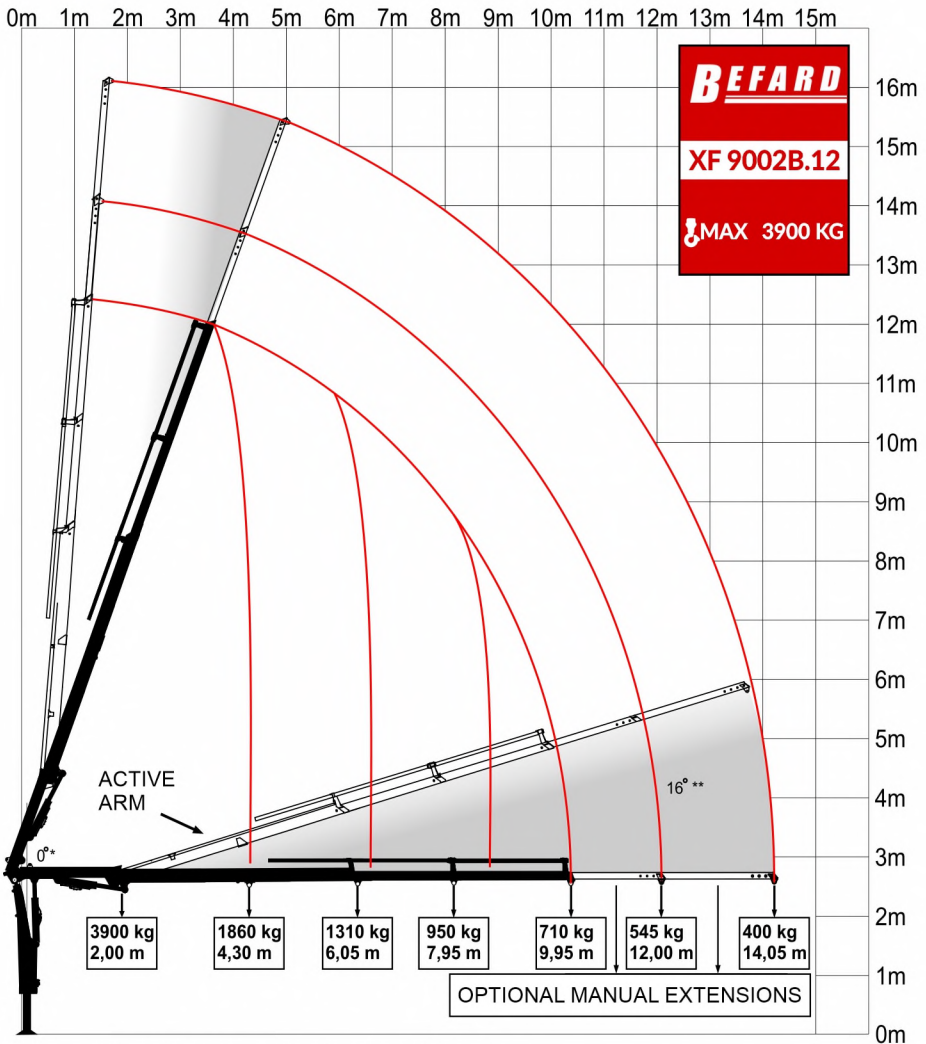
Lifting moment	8,4 tm	
Maximum capacity	3900 kg	
Hydraulic feed	9950 mm	
Maximum reach with manual extensions	14050 mm <small>(opcjonalnie)</small>	
Crane height	1970 mm	
Transport width	2200 mm	
Extend the support	5400 mm	
Rotation angle	180-390°	
Rotation torque (32 Mpa)	17,7 kNm	
Extension stroke angle	70° + 16°	
Downward Tilt Angle	65°	
Working pressure	275 bar	
Recommended pump	Working pressure	350 bar
	Flow	25 l/min
Weight	1130 kg	

The recommended pump flow, given in the card, may change depending on the power supply and the specification of the device that will be mounted to the crane. In standard applications, this is the maximum value.



BEFARD XF 9002B.12

B



* The possibility of working with both arms fully extended

** An Active arm with linkage on crane articulations, allowing for an additional break up to 16° rise

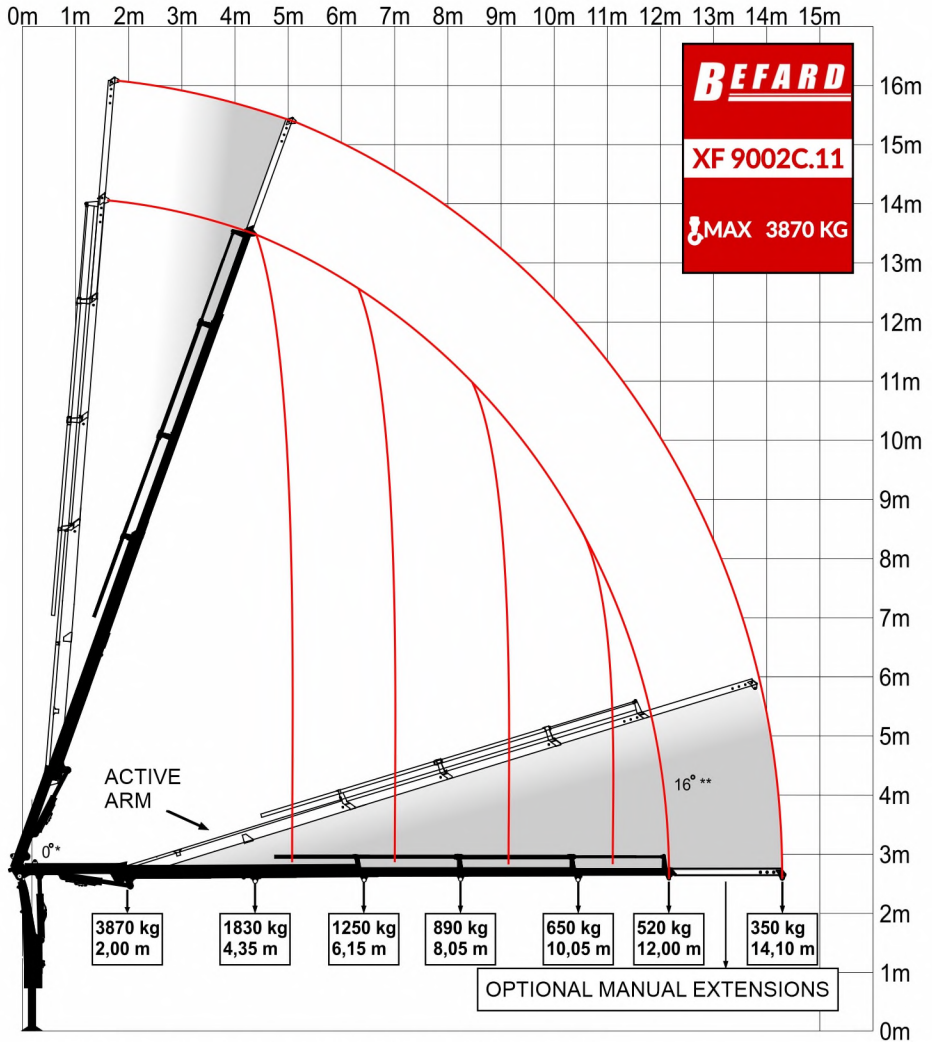
Technical data**XF 9002C**

Lifting moment		8,2 tm
Maximum capacity		3870 kg
Hydraulic feed		12000 mm
Maximum reach with manual extensions		14100 mm (opcjonalnie)
Crane height		1970 mm
Transport width		2225 mm
Extend the support		5400 mm
Rotation angle		180-390°
Rotation torque (32 Mpa)		17,7 kNm
Extension stroke angle		70° + 16°
Downward Tilt Angle		65°
Working pressure		275 bar
Recommended pump	Working pressure	350 bar
	Flow	25 l/min
Weight		1200 kg

The recommended pump flow, given in the card, may change depending on the power supply and the specification of the device that will be mounted to the crane. In standard applications, this is the maximum value.



BEFARD XF 9002C.11



* The possibility of working with both arms fully extended

** An Active arm with linkage on crane articulations, allowing for an additional break up to 16° rise



SPECIFICATION

- Extensions equipped with textolite glides
- The crane is made of certified steel S700 MC (Swedish STRENX, WELDOX, German Salzgitter)
- European producer
- Spare parts always available
- Possibility to configure the device according to individual customer needs
- Low maintenance and operating costs
- Short lead times
- Extremely durable construction
- Steel elements of the hydraulic system
- High-quality hydraulic installation
- Special covers for hydraulic hoses
- High-quality electronics used