



BEFARD XGR
ASSEMBLY ROBOTS ON A CRAWLER CHASSIS

BEFARD XGR ASSEMBLY ROBOT

BEFARD XGR assembly robot is a unit designed in response to growing needs of the window industry. Application of the caterpillar chassis allows operation in difficult construction conditions – driving through rough surfaces, mud, snow and sand is not a problem for it.

BEFARD XGR allows transportation of loads in the construction area in a safe way at the same time maintaining stability and the use of the hydraulic turning device improves precision during installation of panes.

PARAMETERS OF XGR ROBOTS:

- hydraulic extension arms with the total range of 3,55 / 4,25 m
- radio control,
- double-circulation vacuum system,
- power supply from the from an internal
- combustion engine or a battery lithium-ion,
- maximum lifting capacity 800 kg,
- 8 vacuum suction cups,
- selection of colour,
- rotary frame with suction cups – **hydraulically**,
- lateral sliding of the frame with suction cups (right, left 10 cm – **hydraulically**),
- frame with suction cups tiltable to the sides (relatively to the unit – **manually**),
tiltable frame with suction cups (the possibility of lifting the element from the horizontal plane and positioning it vertically – **hydraulically**).

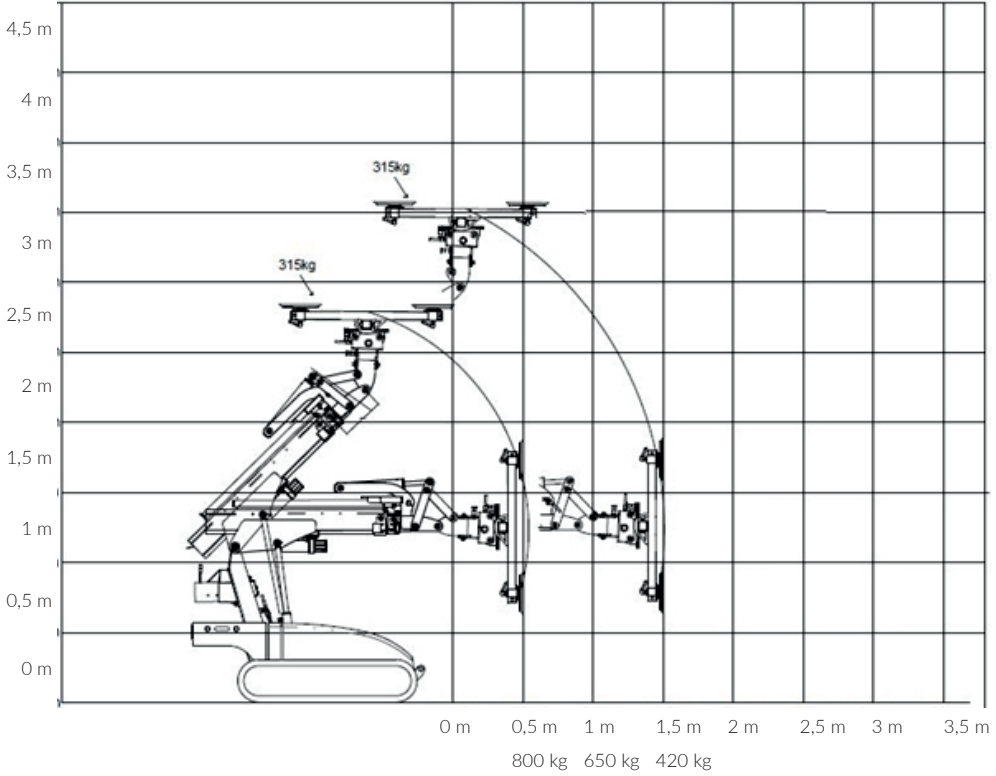


ASSEMBLY ROBOT XGR ADDITIONAL OPTIONAL FEATURES:

- suction cups with adjustable distance from the frame,
- additional hydraulic ejection,
- hydraulic rotation - as standard manual rotation,
- hydraulic side tilt - hand grip as standard,
- suction cup covers.



BEFARD XGR 800



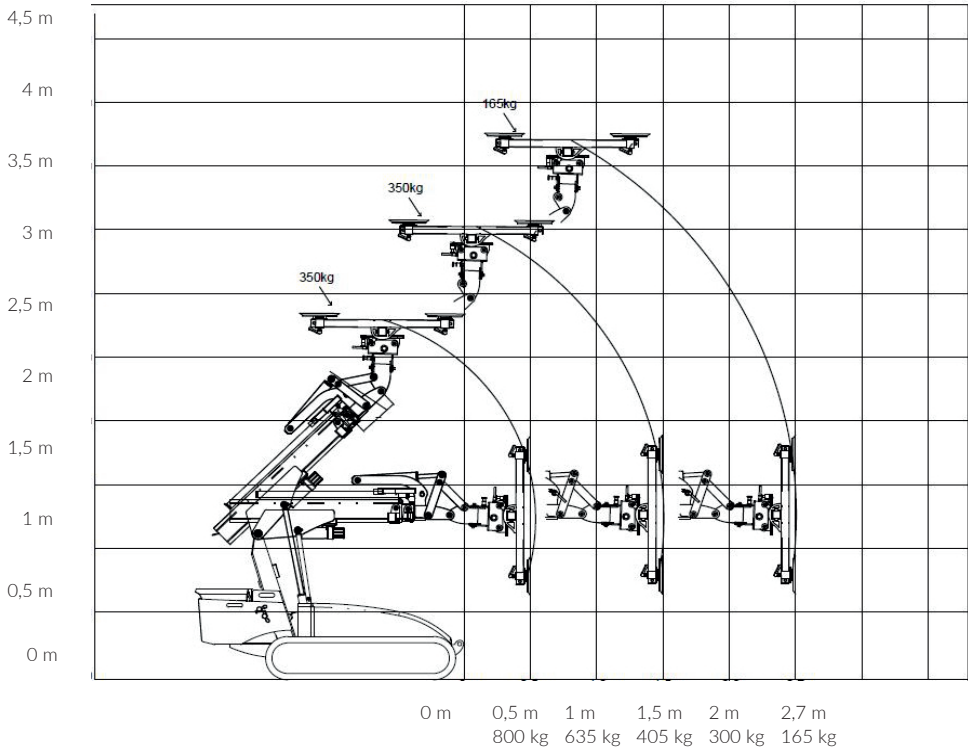
Lifting capacity:
800 kg



Lifting capacity:
8



BEFARD XGR 800



Lifting capacity:
800 kg



Lifting capacity:
8



