



BEFARD XGR
ASSEMBLY ROBOTS

BEFARD XGR ASSEMBLY ROBOT

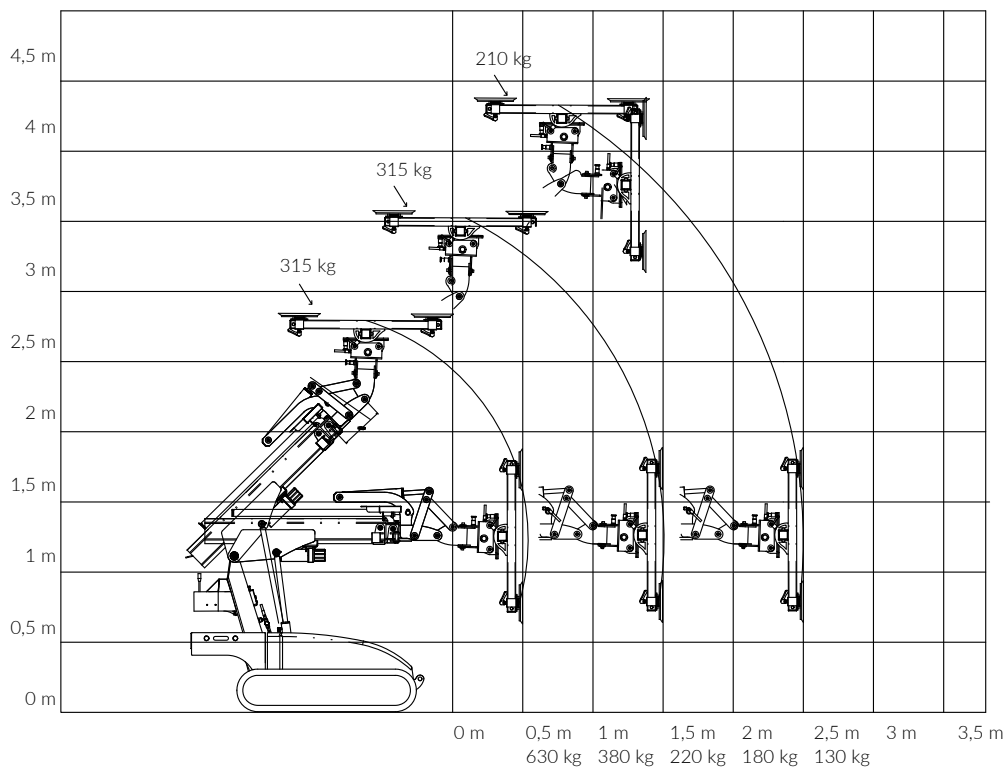
BEFARD XGR assembly robot is a unit designed in response to growing needs of the window industry. Application of the caterpillar chassis allows operation in difficult construction conditions – driving through rough surfaces, mud, snow and sand is not a problem for it.

BEFARD XGR allows transportation of loads in the construction area in a safe way at the same time maintaining stability and the use of the hydraulic turning device improves precision during installation of panes.

PARAMETERS OF XGR ROBOTS:

- two hydraulic extension arms with the total range of 4.25 m,
- radio control using HETRONIC device,
- double-circulation vacuum system,
- power supply from the combustion engine,
- maximum lifting capacity 630 kg,
- 6 vacuum suction cups,
- selection of colour included in the price,
- rotary frame with suction cups – **hydraulically**,
- lateral sliding of the frame with suction cups (right, left 10 cm – **hydraulically**),
- frame with suction cups tiltable to the sides (relatively to the unit – **manually**),
- tiltable frame with suction cups (the possibility of lifting the element from the horizontal plane and positioning it vertically – **hydraulically**).

ASSEMBLY ROBOT XGR



Lifting capacity:
630 kg



Number of suction
cups: 6



Designed and manufactured entirely in Poland

