



BEFARD XJ TRAILER CRANE

TRAILER CRANE

BEFARD XJ TRAILER CRANE

BEFARD XJ TRAILER CRANE is a modern solution ideal for the window industry. In complete set with the XP series suction cup, it will allow installation of heavy glazing elements.

PARAMETERS OF XJ CRANES:

- registered for the total lifting capacity
- maximum lifting capacity 1600 kg
- four hydraulic extension arms with the total range of 9.6 m
- rotation of the column on the rotation flange
- extension arm equipped with textolite slides
- crane made of Swedish steel WELDOX 700
- combustion power supply – petrol engine VANGUARD (electric ignition)
- control from the switching panel

PARAMETERS OF THE TRAILER:

- Vehicle category O2
- Number of axles and wheels 2/4
- Length 4400 mm
- Width 2020 mm

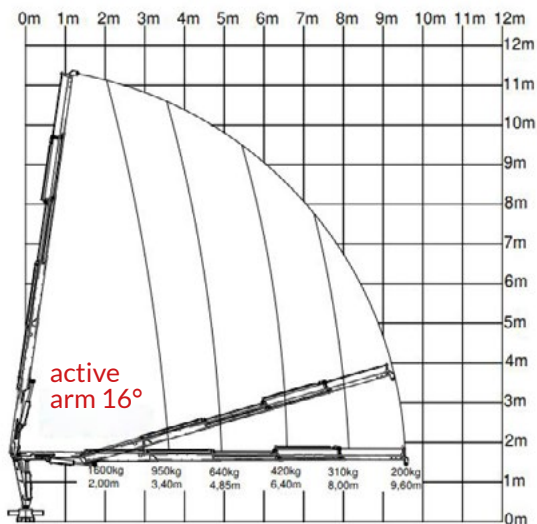
Weight of the entire set: approx. 2200kg

Four supporting feet, expanded manually, lowered hydraulically.

The unit is completely self-reliant and independent. It has its own power supply from a combustion engine. Depending on a specific configuration, the trailer cranes may have various ranges from 8 even up to 12 meters. They can be equipped with 4 hydraulic extension arms which ensures bigger operating capabilities.



Designed and manufactured entirely in Poland



Maximum lifting capacity: 1600 kg



Active arm: 16°



Maximum range: 9.6 m

